

Product datasheet for **TP300757M**

SOX2 (NM_003106) Human Recombinant Protein

Product data:

Product Type: Recombinant Proteins

Description: Recombinant protein of human SRY (sex determining region Y)-box 2 (SOX2), 100 µg

Species: Human

Expression Host: HEK293T

Expression cDNA Clone or AA Sequence: >RC200757 protein sequence
Red=Cloning site **Green**=Tags(s)

MYNMMETELKPPGPQQTSGGGGGNSTAAAAGGNQKNSPDRVKRPMNAFMVWSRGQRRKMAQENPKMHNSE
ISKRLGAEWKLLSETEKRPFIDEAKRLRALHMKEHPDYKYRPRRKTTLMKDKYTLPGGLLAPGGNSMA
SGVGVGAGLGAGVNRMDSYAHMNGWSNGSYSMMQDQLGYPQHPGLNAHGAAQMMPMHRYDVSALQYNM
TSSQTYMNGSPTYMSYSQQGTPGMALGSMGVSVKSEASSPPVVTSSSHSRAPCQAGDLRDMISMYPG
AEVPEPAAPSRLHMSQHYQSGPVPGTAINGTLP LSHM

TRTRPLEQKLISEEDLAANDILDYKDDDDKV

Tag: C-Myc/DDK

Predicted MW: 34.1 kDa

Concentration: >0.05 µg/µL as determined by microplate BCA method

Purity: > 80% as determined by SDS-PAGE and Coomassie blue staining

Buffer: 25 mM Tris-HCl, 100 mM glycine, pH 7.3, 10% glycerol

Bioactivity: EMSA assay (PMID: [25892221](#))

Preparation: Recombinant protein was captured through anti-DDK affinity column followed by conventional chromatography steps.

Note: For testing in cell culture applications, please filter before use. Note that you may experience some loss of protein during the filtration process.

Storage: Store at -80°C.

Stability: Stable for 12 months from the date of receipt of the product under proper storage and handling conditions. Avoid repeated freeze-thaw cycles.

RefSeq: [NP_003097](#)



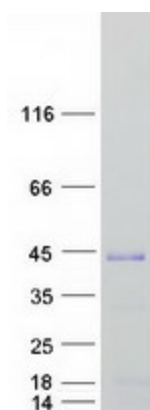
[View online »](#)

Locus ID: 6657
UniProt ID: [P48431](#), [A0A0U3FYV6](#)
RefSeq Size: 2520
Cytogenetics: 3q26.33
RefSeq ORF: 951
Synonyms: ANOP3; MCOPS3

Summary: This intronless gene encodes a member of the SRY-related HMG-box (SOX) family of transcription factors involved in the regulation of embryonic development and in the determination of cell fate. The product of this gene is required for stem-cell maintenance in the central nervous system, and also regulates gene expression in the stomach. Mutations in this gene have been associated with optic nerve hypoplasia and with syndromic microphthalmia, a severe form of structural eye malformation. This gene lies within an intron of another gene called SOX2 overlapping transcript (SOX2OT). [provided by RefSeq, Jul 2008]

Protein Families: Adult stem cells, Cancer stem cells, Embryonic stem cells, ES Cell Differentiation/IPS, Induced pluripotent stem cells, Transcription Factors

Product images:



Coomassie blue staining of purified SOX2 protein (Cat# [TP300757]). The protein was produced from HEK293T cells transfected with SOX2 cDNA clone (Cat# [RC200757]) using MegaTran 2.0 (Cat# [TT210002]).