

## Product datasheet for TP300757

### SOX2 (NM\_003106) Human Recombinant Protein

#### Product data:

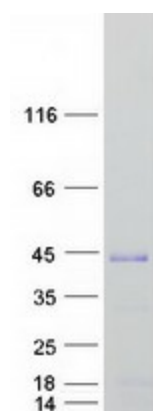
Product Type:	Recombinant Proteins
Description:	Recombinant protein of human SRY (sex determining region Y)-box 2 (SOX2), 20 µg
Species:	Human
Expression Host:	HEK293T
Expression cDNA Clone or AA Sequence:	>RC200757 protein sequence <b>Red</b> =Cloning site <b>Green</b> =Tags(s)
	<p>MYNMMETELKPPGPQQTSGGGGGNSTAAAAGGNQKNPDRVKRPMNAFMVWSRGQRRKMAQENP KMHNSE ISKRLGAEWKLLSETEKRPFIDEAKRLRALHMKEHPDYKYRPRRKTTLMKKDKYTLPGLLAPGGNSMA SGVGVGAGLGAGVNQRMDSYAHMNGWSNGSYMMQDQLGYPQHPGLNAHGAAQMMPMHRVDVS ALQYNSM TSSQTYMNGSPTYSMSYSQQGTPGMALGSMGVSVKSEASSPVPWTSSSHSRAPCQAGDLRDMISMYP G AEVPEPAAPSRLHMSQHYQSGPVPGTAINGTLP LSHM</p> <p><b>TRTRPLEQKLISEEDLAANDILDYKDDDDKV</b></p>
Tag:	C-Myc/DDK
Predicted MW:	34.1 kDa
Concentration:	>0.05 µg/µL as determined by microplate BCA method
Purity:	> 80% as determined by SDS-PAGE and Coomassie blue staining
Buffer:	25 mM Tris-HCl, 100 mM glycine, pH 7.3, 10% glycerol
Bioactivity:	EMSA assay (PMID: <a href="#">25892221</a> )
Preparation:	Recombinant protein was captured through anti-DDK affinity column followed by conventional chromatography steps.
Note:	For testing in cell culture applications, please filter before use. Note that you may experience some loss of protein during the filtration process.
Storage:	Store at -80°C.



[View online »](#)

<b>Stability:</b>	Stable for 12 months from the date of receipt of the product under proper storage and handling conditions. Avoid repeated freeze-thaw cycles.
<b>RefSeq:</b>	<a href="#">NP_003097</a>
<b>Locus ID:</b>	6657
<b>UniProt ID:</b>	<a href="#">P48431</a>
<b>RefSeq Size:</b>	2520
<b>Cytogenetics:</b>	3q26.33
<b>RefSeq ORF:</b>	951
<b>Synonyms:</b>	ANOP3; MCOPS3
<b>Summary:</b>	This intronless gene encodes a member of the SRY-related HMG-box (SOX) family of transcription factors involved in the regulation of embryonic development and in the determination of cell fate. The product of this gene is required for stem-cell maintenance in the central nervous system, and also regulates gene expression in the stomach. Mutations in this gene have been associated with optic nerve hypoplasia and with syndromic microphthalmia, a severe form of structural eye malformation. This gene lies within an intron of another gene called SOX2 overlapping transcript (SOX2OT). [provided by RefSeq, Jul 2008]
<b>Protein Families:</b>	Adult stem cells, Cancer stem cells, Embryonic stem cells, ES Cell Differentiation/IPS, Induced pluripotent stem cells, Transcription Factors

### Product images:



Coomassie blue staining of purified SOX2 protein (Cat# TP300757). The protein was produced from HEK293T cells transfected with SOX2 cDNA clone (Cat# [RC200757]) using MegaTran 2.0 (Cat# [TT210002]).