

## Product datasheet for **TP300756L**

### **RNPEP (NM\_020216) Human Recombinant Protein**

#### Product data:

Product Type:	Recombinant Proteins
Description:	Recombinant protein of human arginyl aminopeptidase (aminopeptidase B) (RNPEP), 1 mg
Species:	Human
Expression Host:	HEK293T
Expression cDNA Clone or AA Sequence:	>RC200756 representing NM_020216 <b>Red</b> =Cloning site <b>Green</b> =Tags(s)

MASGEHSPGSGAARRPLHSAQAVDVASASNFRAFELLHLHLDLRAEFGPPGPGAGSRGLSGTAVLDRCL  
EPEGAAELRLDSHPCLEVTAALRRERPGESEPPAEPVSFYTQPFSHYGQALCVSFPQPCRAAERLQVLL  
TYRVGEGPGVCWLAPEQTAGKKKPFVYTQGQAVLNRAFFPCFDTPAVKYKYSALIEVPDGFTAVMSASTW  
EKRGPNKFFQMCQPIPSYLIALAIGDLVSAEVGPRSRVWAEPCLIDAAKEEYNGVIEEFLATGEKLFGP  
YVWGRYDLLFMPPSFPFGGMENPCLTFVTPCLLAGDRSLADVIIHEISHSWFGNLVTNANWGEFWLNEGF  
TMYAQRRISTILFGAAYTCLEAATGRALLRQHMDITGEENPLNKLRVKIEPGVDPDDTYNETPYEKGFCE  
VSYLAHLVGDQDQFDSFLKAYVHEFKFRSILADDFLFYLFPELKKKRVDIIPGFEDRWLNTPGWPP  
YLPDLSPGDSLMPAEELAQLWAAEELDMKAIEAVAISPWKTYQLVYFLDKILQKSPLPPGNVKKLGDY  
PSISNARNAELRLRWGQIVLKNHEDFWKVKFEFLHNQGGKQKYLPLYHAMMGGSEVAQTLAKETFASTA  
SQLHSNVVNYVQQIVAPKGS

**TRTRPLEQKLISEEDLAANDILDYKDDDDKV**

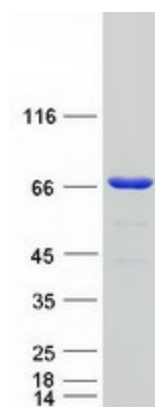
Tag:	C-Myc/DDK
Predicted MW:	72.4 kDa
Concentration:	>0.05 µg/µL as determined by microplate BCA method
Purity:	> 80% as determined by SDS-PAGE and Coomassie blue staining
Buffer:	25 mM Tris-HCl, 100 mM glycine, pH 7.3, 10% glycerol
Preparation:	Recombinant protein was captured through anti-DDK affinity column followed by conventional chromatography steps.
Note:	For testing in cell culture applications, please filter before use. Note that you may experience some loss of protein during the filtration process.
Storage:	Store at -80°C.



[View online »](#)

<b>Stability:</b>	Stable for 12 months from the date of receipt of the product under proper storage and handling conditions. Avoid repeated freeze-thaw cycles.
<b>RefSeq:</b>	<a href="#">NP_064601</a>
<b>Locus ID:</b>	6051
<b>UniProt ID:</b>	<a href="#">Q9H4A4</a>
<b>RefSeq Size:</b>	2430
<b>Cytogenetics:</b>	1q32.1
<b>RefSeq ORF:</b>	1950
<b>Synonyms:</b>	AP-B; APB
<b>Summary:</b>	Exopeptidase which selectively removes arginine and/or lysine residues from the N-terminus of several peptide substrates including Arg(0)-Leu-enkephalin, Arg(0)-Met-enkephalin and Arg(-1)-Lys(0)-somatostatin-14. Can hydrolyze leukotriene A4 (LTA-4) into leukotriene B4 (LTB-4) (By similarity).[UniProtKB/Swiss-Prot Function]
<b>Protein Families:</b>	Druggable Genome, Protease, Secreted Protein

### Product images:



Coomassie blue staining of purified RNPEP protein (Cat# [TP300756]). The protein was produced from HEK293T cells transfected with RNPEP cDNA clone (Cat# [RC200756]) using MegaTran 2.0 (Cat# [TT210002]).