

Product datasheet for **TP300755L**

beta III Tubulin (TUBB3) (NM_006086) Human Recombinant Protein

Product data:

Product Type: Recombinant Proteins

Description: Recombinant protein of human tubulin, beta 3 (TUBB3), 1 mg

Species: Human

Expression Host: HEK293T

Expression cDNA Clone >RC200755 protein sequence

or AA Sequence: **Red**=Cloning site **Green**=Tags(s)

MREIVHIQAGQCGNQIGAKFWEVISDEHGIDPSGNYVGSDSLQLERISVYYNEASSHKYVPRAILVDLEP
GTMDSVRSGAFGHLFRPDNFIFGQSGAGNNWAKGHYTEGAELVDSVLDVWRKECENCDCCLQGFQLTHSLG
GGTGSGMGTLISKVREEYPDRIMNTFSVPSPKVSDTVVEPYNATLSIHLVENTDETYCIDNEALYDI
CFRTLKLATPTYGDLNHLVSATMSGVTTSLRFPQNLADLRKLVNMPFRLHFFMPGFAPLTARGSQQ
YRALTVPELTQQMFDANKMMAACDPRHGRYLTVATVFRGRMSMKEVDEQMLAIQSKNSSYFVEWIPNNVK
VAVCDIPPRGLKMSSTFIGNSTAIQELFKRISEQFTAMFRRKAFLHWYTGEGMDEMEFTEAESNMNDLVS
EYQQYQDATAEEEGEMYEDDEEESEAQGPK

TRTRPLEQKLISEEDLAANDILDYKDDDDKV

Tag: C-Myc/DDK

Predicted MW: 50.3 kDa

Concentration: >0.05 µg/µL as determined by microplate BCA method

Purity: > 80% as determined by SDS-PAGE and Coomassie blue staining

Buffer: 25 mM Tris-HCl, 100 mM glycine, pH 7.3, 10% glycerol

Bioactivity: Co-immunoprecipitation (PMID: [25754961](#))

Preparation: Recombinant protein was captured through anti-DDK affinity column followed by conventional chromatography steps.

Note: For testing in cell culture applications, please filter before use. Note that you may experience some loss of protein during the filtration process.

Storage: Store at -80°C.

Stability: Stable for 12 months from the date of receipt of the product under proper storage and handling conditions. Avoid repeated freeze-thaw cycles.



[View online »](#)

RefSeq: [NP_006077](#)

Locus ID: 10381

UniProt ID: [Q13509](#), [Q53G92](#)

RefSeq Size: 1794

Cytogenetics: 16q24.3

RefSeq ORF: 1350

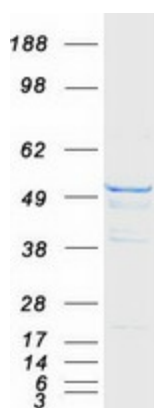
Synonyms: beta-4; CDCBM; CDCBM1; CFEOM3; CFEOM3A; FEOM3; TUBB4

Summary: This gene encodes a class III member of the beta tubulin protein family. Beta tubulins are one of two core protein families (alpha and beta tubulins) that heterodimerize and assemble to form microtubules. This protein is primarily expressed in neurons and may be involved in neurogenesis and axon guidance and maintenance. Mutations in this gene are the cause of congenital fibrosis of the extraocular muscles type 3. Alternate splicing results in multiple transcript variants. A pseudogene of this gene is found on chromosome 6. [provided by RefSeq, Oct 2010]

Protein Families: Druggable Genome, ES Cell Differentiation/IPS

Protein Pathways: Gap junction, Pathogenic Escherichia coli infection

Product images:



Coomassie blue staining of purified TUBB3 protein (Cat# [TP300755]). The protein was produced from HEK293T cells transfected with TUBB3 cDNA clone (Cat# [RC200755]) using MegaTran 2.0 (Cat# [TT210002]).