

Product datasheet for **TP300737L**

A RAF (ARAF) (NM_001654) Human Recombinant Protein

Product data:

Product Type:	Recombinant Proteins
Description:	Recombinant protein of human v-raf murine sarcoma 3611 viral oncogene homolog (ARAF), 1 mg
Species:	Human
Expression Host:	HEK293T
Expression cDNA Clone or AA Sequence:	>RC200737 protein sequence Red =Cloning site Green =Tags(s)

MEPPRGPPANGAEPSRAVGTVKVYLPNKQRTVTVTRDGMSVYDSLKALKVIRGLNQDCCVYRLIKGRKT
VTAWDTAIAPLDGEEELIVEVLEDVPLTMHNFVRKTFSLAFCDLCLKFLFHGFRCQTCGYKFHQHCSSKV
PTVCVDMSTNRQQFYHSVQDLSGGSRQHEAPSNRPLNELLTPQGSPRTQHCDPEHFPPAPANAPLQRI
RSTSTPNVHMVSTTAPMDSNLIQLTGQSFSTDAAGSRGSDGTPRGSPSPASVSSGRKSPHSKSPAEQRE
RKSLADDDKKVKNLGYRDSGYWVPPSEVQLLKRIGTGSFGTVFRGRWHGDVAVKVLKVSQPTAEQAQA
FKNEMQVLRKTRHVNILLFMGMTRPGFAITQWCEGSSLYHHLHVADTRFDMVQLIDVARQTAQGMDYL
HAKNIIHRDLKSNNIFLHEGLTVKIGDFGLATVKTRWSGAQPLEQPSGSLVWMAAEVIRMQDPNPYSFQS
DVYAYGWVLYELMTGSLPYSHIGCRDQIIFMVGRGYLSPDLKISSNCPKAMRRLSDCLKFQREERPLF
PQILATIELLQRSLPKIERSASEPSLHRTQADELPACLLSAARLVP

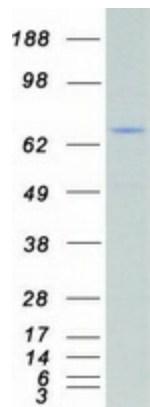
TRTRPLEQKLISEEDLAANDILDYKDDDDKV

Tag:	C-Myc/DDK
Predicted MW:	67.4 kDa
Concentration:	>0.05 µg/µL as determined by microplate BCA method
Purity:	> 80% as determined by SDS-PAGE and Coomassie blue staining
Buffer:	25 mM Tris-HCl, 100 mM glycine, pH 7.3, 10% glycerol
Preparation:	Recombinant protein was captured through anti-DDK affinity column followed by conventional chromatography steps.
Note:	For testing in cell culture applications, please filter before use. Note that you may experience some loss of protein during the filtration process.
Storage:	Store at -80°C.



[View online >](#)

Stability:	Stable for 12 months from the date of receipt of the product under proper storage and handling conditions. Avoid repeated freeze-thaw cycles.
RefSeq:	NP_001645
Locus ID:	369
UniProt ID:	P10398 , A0A024R178
RefSeq Size:	2562
Cytogenetics:	Xp11.3
RefSeq ORF:	1818
Synonyms:	A-RAF; ARAF1; PKS2; RAFA1
Summary:	This proto-oncogene belongs to the RAF subfamily of the Ser/Thr protein kinase family, and maybe involved in cell growth and development. Alternatively spliced transcript variants encoding different isoforms have been found for this gene.[provided by RefSeq, Jan 2012]
Protein Families:	Druggable Genome, Protein Kinase
Protein Pathways:	Acute myeloid leukemia, Bladder cancer, Chronic myeloid leukemia, Colorectal cancer, Endometrial cancer, ErbB signaling pathway, Glioma, Insulin signaling pathway, Long-term depression, Long-term potentiation, Melanoma, Natural killer cell mediated cytotoxicity, Non-small cell lung cancer, Pancreatic cancer, Pathways in cancer, Progesterone-mediated oocyte maturation, Prostate cancer, Regulation of actin cytoskeleton, Renal cell carcinoma, Vascular smooth muscle contraction

Product images:


Coomassie blue staining of purified ARAF protein (Cat# [TP300737]). The protein was produced from HEK293T cells transfected with ARAF cDNA clone (Cat# [RC200737]) using MegaTran 2.0 (Cat# [TT210002]).