

## Product datasheet for **TP300731M**

### Integrin beta 5 (ITGB5) (NM\_002213) Human Recombinant Protein

#### Product data:

**Product Type:** Recombinant Proteins  
**Description:** Recombinant protein of human integrin, beta 5 (ITGB5), 100 µg  
**Species:** Human  
**Expression Host:** HEK293T  
**Expression cDNA Clone or AA Sequence:** >RC200731 protein sequence  
Red=Cloning site Green=Tags(s)

MPRAPAPLYACLLGLCALLPRLAGLNICTSGSATSCEECLLIHPKCAWCSKEDFGSPRSITSRCDLRANL  
 VKNGCGGEIESPASSFHVLRSLPLSSKSGSAGWDVIQMTPEIAVNLRPGDKTTFQLQVRQVEDYPVDL  
 YYLMDLSLSMKDDLDNIRSLGKLAEMRKLTSNFRLGFGSFVDKDISPFSYAPRYQTNPICIGYKLFPN  
 CVPSFGFRHLLPLTDRVDSFNEEVRKQVRSRNRDAPEGGFDAVLQAAVCKEKIGWRKDALHLLVFTTDDV  
 PHIALDGKLGGLVQPHDGQCHLNEANEYASNQMDYPSLALLGEKLAENNINLIFAVTKNHMYMLYKNFTA  
 LIPGTTVEILDGDSKNIIQLIINAYNSIRSKVELSVWDQPEDLNLFFATCQDGVSYPGQRKCEGLKIGD  
 TASFEVSLEARSCPSRHEHVFAALRPVGFDRSLEVGVTYNCTCGSCVGLPENSAARCNGSGTYVCGLCECS  
 PGYLGTRCECQDGENQSVYQNLCREAEGKPLCSGRGDCSCNQCSCFESEFGKIYGPFCEDNFSCARNKG  
 VLCSGHGECHCGECKCHAGYIGDNCNCSTDISTCRGRDQGICSERGHCLCGQCQCTEPGAFGEMCEKCPT  
 CPDACSTKRDCVECLLLHSGKPDNQTCHSLCRDEVITWVDIVKDDQEAVLCFYKTAKDCVMMFTYVELP  
 SGKSNLTVLREPECGNTPNAMTILLAVGSILLVGLALLAIWKLVTIHDRREFAKFQSERSRARYEMAS  
 NPLYRKPISTHTVDFTFNKFNKSYNGTVD

TRTRPLEQKLISEEDLAANDILDYKDDDDKV

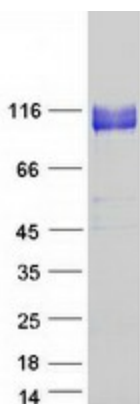
**Tag:** C-Myc/DDK  
**Predicted MW:** 87.9 kDa  
**Concentration:** >0.05 µg/µL as determined by microplate BCA method  
**Purity:** > 80% as determined by SDS-PAGE and Coomassie blue staining  
**Buffer:** 25 mM Tris-HCl, 100 mM glycine, pH 7.3, 10% glycerol  
**Preparation:** Recombinant protein was captured through anti-DDK affinity column followed by conventional chromatography steps.  
**Note:** For testing in cell culture applications, please filter before use. Note that you may experience some loss of protein during the filtration process.



[View online »](#)

<b>Storage:</b>	Store at -80°C.
<b>Stability:</b>	Stable for 12 months from the date of receipt of the product under proper storage and handling conditions. Avoid repeated freeze-thaw cycles.
<b>RefSeq:</b>	<a href="#">NP_002204</a>
<b>Locus ID:</b>	3693
<b>UniProt ID:</b>	<a href="#">P18084</a> , <a href="#">L7RT22</a>
<b>RefSeq Size:</b>	3392
<b>Cytogenetics:</b>	3q21.2
<b>RefSeq ORF:</b>	2397
<b>Summary:</b>	This gene encodes a beta subunit of integrin, which can combine with different alpha chains to form a variety of integrin heterodimers. Integrins are integral cell-surface receptors that participate in cell adhesion as well as cell-surface mediated signaling. The alphav beta5 integrin is involved in adhesion to vitronectin. [provided by RefSeq, Aug 2017]
<b>Protein Families:</b>	Druggable Genome, Transmembrane
<b>Protein Pathways:</b>	Arrhythmogenic right ventricular cardiomyopathy (ARVC), Dilated cardiomyopathy, ECM-receptor interaction, Focal adhesion, Hypertrophic cardiomyopathy (HCM), Regulation of actin cytoskeleton

### Product images:



Coomassie blue staining of purified ITGB5 protein (Cat# [TP300731]). The protein was produced from HEK293T cells transfected with ITGB5 cDNA clone (Cat# [RC200731]) using MegaTran 2.0 (Cat# [TT210002]).