

Product datasheet for **TP300731L**

Integrin beta 5 (ITGB5) (NM_002213) Human Recombinant Protein

Product data:

Product Type:	Recombinant Proteins
Description:	Recombinant protein of human integrin, beta 5 (ITGB5), 1 mg
Species:	Human
Expression Host:	HEK293T
Expression cDNA Clone or AA Sequence:	>RC200731 protein sequence Red =Cloning site Green =Tags(s)

MPRAPAPLYACLLGLCALLPRLAGLNICTSGSATSCEECLLIHPKCAWCSKEDFGSPRSITSRCDLRANL
VKNGCGGEIESPASSFHVLRSLPLSSKSGSAGWDVIQMPQEIAVNLRPGDKTTFQLQVRQVEDYPVDL
YYLMDLSLSMKDDLDNIRSLGKLAEMRKLTSNFRLGFGSFVDKDISPFSYAPRYQTNPICIGYKLFPN
CVPSFGFRHLLPLTDRVDSFNEEVRKQVRSRNRDAPEGGFDAVLQAAVCKEKIGWRKDALHLLVFTTDDV
PHIALDGKLGGLVQPHDGQCHLNEANEYASNQMDYPSLALLGEKLAENNINLIFAVTKNHMYLYKNFTA
LIPGTTVEILDGDSKNIIQLIINAYNSIRSKVELSVWDQPEDLNLFFATCQDGVSYPGQRKCEGLKIGD
TASFEVSLEARSCPSRHEHVFAALRPVGFDRDSLEVGVTYNCTCGSCVGLPENSAARCNGSGTYVCGLCECS
PGYLGTRCECQDGENQSVYQNLCREAEGKPLCSGRGDCSCNQCSCFESEFGKIYGPFCEDNFSCARNKG
VLCSGHGECHCGECKCHAGYIGDNCNCSTDISTCRGRDQGICSERGHCLCGQCQCTEPGAFGEMCEKCPT
CPDACSTKRDCVECLLLHSGKPDNQTCHSLCRDEVITWVDTIVKDDQEAVLCFYKTAKDCVMMFTYVELP
SGKSNLTVLREPECGNTPNAMTILLAVGSILLVGLALLAIWKLLVTIHDRREFAKFQSERSRARYEMAS
NPLYRKPISTHTVDFTFNKFNKSYNGTVD

TRTRPLEQKLISEEDLAANDILDYKDDDDKV

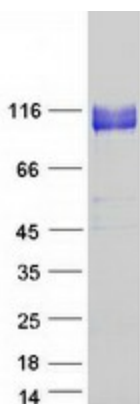
Tag:	C-Myc/DDK
Predicted MW:	87.9 kDa
Concentration:	>0.05 µg/µL as determined by microplate BCA method
Purity:	> 80% as determined by SDS-PAGE and Coomassie blue staining
Buffer:	25 mM Tris-HCl, 100 mM glycine, pH 7.3, 10% glycerol
Preparation:	Recombinant protein was captured through anti-DDK affinity column followed by conventional chromatography steps.
Note:	For testing in cell culture applications, please filter before use. Note that you may experience some loss of protein during the filtration process.



[View online »](#)

Storage:	Store at -80°C.
Stability:	Stable for 12 months from the date of receipt of the product under proper storage and handling conditions. Avoid repeated freeze-thaw cycles.
RefSeq:	NP_002204
Locus ID:	3693
UniProt ID:	P18084 , L7RT22
RefSeq Size:	3392
Cytogenetics:	3q21.2
RefSeq ORF:	2397
Summary:	This gene encodes a beta subunit of integrin, which can combine with different alpha chains to form a variety of integrin heterodimers. Integrins are integral cell-surface receptors that participate in cell adhesion as well as cell-surface mediated signaling. The alphav beta5 integrin is involved in adhesion to vitronectin. [provided by RefSeq, Aug 2017]
Protein Families:	Druggable Genome, Transmembrane
Protein Pathways:	Arrhythmogenic right ventricular cardiomyopathy (ARVC), Dilated cardiomyopathy, ECM-receptor interaction, Focal adhesion, Hypertrophic cardiomyopathy (HCM), Regulation of actin cytoskeleton

Product images:



Coomassie blue staining of purified ITGB5 protein (Cat# [TP300731]). The protein was produced from HEK293T cells transfected with ITGB5 cDNA clone (Cat# [RC200731]) using MegaTran 2.0 (Cat# [TT210002]).