

Product datasheet for **TP300730M**

Lysozyme (LYZ) (NM_000239) Human Recombinant Protein

Product data:

Product Type: Recombinant Proteins

Description: Recombinant protein of human lysozyme (renal amyloidosis) (LYZ), 100 µg

Species: Human

Expression Host: HEK293T

Expression cDNA Clone >RC200730 protein sequence

or AA Sequence: **Red**=Cloning site **Green**=Tags(s)

MKALIVLGLVLLSVTVQGKVFERCELARTLKRLGMDGYRGLANWMCLAKWESGYNTRATNYNAGDRST
DYGIFQINSRYWCNDGKTPGAVNACHLSCSALLQDNIADAVACAKRVRDPQGIRAWVAWRNRCQNRDVR
QYVQGCGV

TRTRPLEQKLISEEDLAANDILDYKDDDDKV

Tag: C-Myc/DDK

Predicted MW: 14.7 kDa

Concentration: >0.05 µg/µL as determined by microplate BCA method

Purity: > 80% as determined by SDS-PAGE and Coomassie blue staining

Buffer: 25 mM Tris-HCl, 100 mM glycine, pH 7.3, 10% glycerol

Preparation: Recombinant protein was captured through anti-DDK affinity column followed by conventional chromatography steps.

Note: For testing in cell culture applications, please filter before use. Note that you may experience some loss of protein during the filtration process.

Storage: Store at -80°C.

Stability: Stable for 12 months from the date of receipt of the product under proper storage and handling conditions. Avoid repeated freeze-thaw cycles.

RefSeq: [NP_000230](#)

Locus ID: 4069

UniProt ID: [P61626](#), [B2R4C5](#)

RefSeq Size: 1516



[View online »](#)

Cytogenetics: 12q15

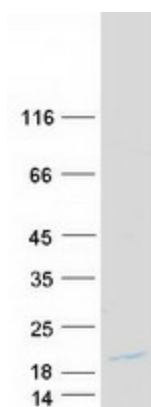
RefSeq ORF: 444

Synonyms: LYZF1; LZM

Summary: This gene encodes human lysozyme, whose natural substrate is the bacterial cell wall peptidoglycan (cleaving the beta[1-4]glycosidic linkages between N-acetylmuramic acid and N-acetylglucosamine). Lysozyme is one of the antimicrobial agents found in human milk, and is also present in spleen, lung, kidney, white blood cells, plasma, saliva, and tears. The protein has antibacterial activity against a number of bacterial species. Missense mutations in this gene have been identified in heritable renal amyloidosis. [provided by RefSeq, Oct 2014]

Protein Families: Druggable Genome

Product images:



Coomassie blue staining of purified LYZ protein (Cat# [TP300730]). The protein was produced from HEK293T cells transfected with LYZ cDNA clone (Cat# [RC200730]) using MegaTran 2.0 (Cat# [TT210002]).