

Product datasheet for **TP300714L**

ICAM1 (NM_000201) Human Recombinant Protein

Product data:

Product Type:	Recombinant Proteins
Description:	Purified recombinant protein of Homo sapiens intercellular adhesion molecule 1 (ICAM1), 1 mg
Species:	Human
Expression Host:	HEK293T
Expression cDNA Clone or AA Sequence:	>RC200714 representing NM_000201 Red=Cloning site Green=Tags(s)

MAPSSRPALPALLVLLGALFPGPGNAQTSVSPSKVILPRGGSVLVTCSTSCDQPKLLGIETPLPKKELL
LPGNNRKVYELSNVQEDSQPMCYSNCPDQGQSTAKTFLTVYWTPERVELAPLPSWQPVGKNLTLRCQVEGG
APRANLTVLLRGEKELKREPAVGEPAEVTTTVLVRDHHGANFSCRTDLRPQGLELFENTSAPYQLQ
TFVLPATPPQLVSPRVLEVDTQGTWVCSLDGLFPVSEAQVHLALGDQRLNPTVTYGNDSFSAKASVSVTA
EDEGTQRLTCAVILGNQSQETLQTVTIYSFPAPNVILTKPEVSEGTEVTVKCEAHPRAKVTLNGVPAQPL
GPRAQLLLKATPEDNGRSFSCSATLEVAGQLIHKNQTRRLRVLYGPRLDERDCPGNWTWPENSQQTPMCQ
AWGNPLPELKCLKDGTFLPIGESVTVTRDLEGTYLCCRARSTQGEVTREVTNVLSPRYEIVITVAAA
VIMGTAGLSTYLYNRQRKIKKYRLQQAQKGTMPKPNTPQATPP

TRTRPLEQKLISEEDLAANDILDYKDDDDKV

Tag:	C-Myc/DDK
Predicted MW:	55.2 kDa
Concentration:	>0.05 µg/µL as determined by microplate BCA method
Purity:	> 80% as determined by SDS-PAGE and Coomassie blue staining
Buffer:	25 mM Tris-HCl, 100 mM glycine, pH 7.3, 10% glycerol
Preparation:	Recombinant protein was captured through anti-DDK affinity column followed by conventional chromatography steps.
Note:	For testing in cell culture applications, please filter before use. Note that you may experience some loss of protein during the filtration process.
Storage:	Store at -80°C.
Stability:	Stable for 12 months from the date of receipt of the product under proper storage and handling conditions. Avoid repeated freeze-thaw cycles.



[View online »](#)

RefSeq: [NP_000192](#)

Locus ID: 3383

UniProt ID: [P05362](#), [A0A384MEK5](#)

RefSeq Size: 2986

Cytogenetics: 19p13.2

RefSeq ORF: 1596

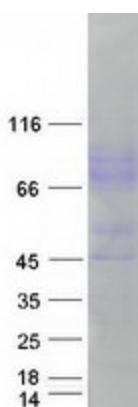
Synonyms: BB2; CD54; P3.58

Summary: This gene encodes a cell surface glycoprotein which is typically expressed on endothelial cells and cells of the immune system. It binds to integrins of type CD11a / CD18, or CD11b / CD18 and is also exploited by Rhinovirus as a receptor. [provided by RefSeq, Jul 2008]

Protein Families: Druggable Genome, ES Cell Differentiation/IPS, Transmembrane

Protein Pathways: Cell adhesion molecules (CAMs), Leukocyte transendothelial migration, Natural killer cell mediated cytotoxicity, Viral myocarditis

Product images:



Coomassie blue staining of purified ICAM1 protein (Cat# [TP300714]). The protein was produced from HEK293T cells transfected with ICAM1 cDNA clone (Cat# [RC200714]) using MegaTran 2.0 (Cat# [TT210002]).