

## Product datasheet for TP300711M

### IKB alpha (NFKBIA) (NM\_020529) Human Recombinant Protein

#### Product data:

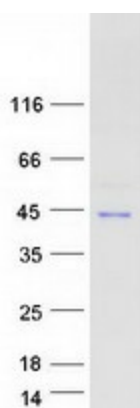
Product Type:	Recombinant Proteins
Description:	Recombinant protein of human nuclear factor of kappa light polypeptide gene enhancer in B-cells inhibitor, alpha (NFKBIA), 100 µg
Species:	Human
Expression Host:	HEK293T
Expression cDNA Clone or AA Sequence:	>RC200711 representing NM_020529 <b>Red</b> =Cloning site <b>Green</b> =Tags(s)
	MFQAAERPQEWAMEGPRDGLKKERLLDDRHDSGLDSMKDEEYEQMVKELQEIRLEPQEVPRGSEPWKQQL TEDGDSFLHLAIIHEEKALTMVIRQVKGDLAFLNFQNNLQQTPLHLAVITNQPEIAEALLGAGCDPELR DFRGNTPLHLACEQGCLASVGVLTQSCTTPHLHSILKATNYNGHTCLHLASIHGYLGIVELLVSLGADVN AQEPCNGRTALHLAVDLQNPDLVSLLLKCGADVNRVTYQGYSPLYQLTWGRPSTRIQQQLGQLTLENLQML PESEDEESYDTESEFTEFTEDELPHYDDCVFGGQRLTL
	<b>TRTRPLEQKLISEEDLAANDILDYKDDDDKV</b>
Tag:	C-Myc/DDK
Predicted MW:	35.4 kDa
Concentration:	>0.05 µg/µL as determined by microplate BCA method
Purity:	> 80% as determined by SDS-PAGE and Coomassie blue staining
Buffer:	25 mM Tris-HCl, 100 mM glycine, pH 7.3, 10% glycerol
Preparation:	Recombinant protein was captured through anti-DDK affinity column followed by conventional chromatography steps.
Note:	For testing in cell culture applications, please filter before use. Note that you may experience some loss of protein during the filtration process.
Storage:	Store at -80°C.
Stability:	Stable for 12 months from the date of receipt of the product under proper storage and handling conditions. Avoid repeated freeze-thaw cycles.
RefSeq:	<a href="#">NP_065390</a>
Locus ID:	4792



[View online »](#)

UniProt ID:	<a href="#">P25963</a>
RefSeq Size:	1550
Cytogenetics:	14q13.2
RefSeq ORF:	951
Synonyms:	EDAID2; IKBA; MAD-3; NFKBI
Summary:	This gene encodes a member of the NF-kappa-B inhibitor family, which contain multiple ankrin repeat domains. The encoded protein interacts with REL dimers to inhibit NF-kappa-B/REL complexes which are involved in inflammatory responses. The encoded protein moves between the cytoplasm and the nucleus via a nuclear localization signal and CRM1-mediated nuclear export. Mutations in this gene have been found in ectodermal dysplasia anhidrotic with T-cell immunodeficiency autosomal dominant disease. [provided by RefSeq, Aug 2011]
Protein Families:	Druggable Genome
Protein Pathways:	Adipocytokine signaling pathway, Apoptosis, B cell receptor signaling pathway, Chemokine signaling pathway, Chronic myeloid leukemia, Cytosolic DNA-sensing pathway, Epithelial cell signaling in Helicobacter pylori infection, Neurotrophin signaling pathway, NOD-like receptor signaling pathway, Pathways in cancer, Prostate cancer, RIG-I-like receptor signaling pathway, Small cell lung cancer, T cell receptor signaling pathway, Toll-like receptor signaling pathway

### Product images:



Coomassie blue staining of purified NFKBIA protein (Cat# [TP300711]). The protein was produced from HEK293T cells transfected with NFKBIA cDNA clone (Cat# [RC200711]) using MegaTran 2.0 (Cat# [TT210002]).