

Product datasheet for **TP300708M**

Myosin (MYL6) (NM_021019) Human Recombinant Protein

Product data:

Product Type: Recombinant Proteins
Description: Recombinant protein of human myosin, light chain 6, alkali, smooth muscle and non-muscle (MYL6), transcript variant 1, 100 µg

Species: Human

Expression Host: HEK293T

Expression cDNA Clone or AA Sequence: >RC200708 protein sequence
Red=Cloning site **Green**=Tags(s)

MCDFTEDQTAEFKEAFQLFDRTGDGKILYSQCGDVMRALGQNPTNAEVLKVLGNPKSDEMNVKVLDFEHF
 LPMLQTVAKNKDQGTIEDYVEGLRVFDKEGNGTVMGAEIRHVLVTLGKEMTEEEVEMLVAGHEDSNGCIN
 YEAFVRHILSG

TRTRPLEQKLISEEDLAANDILDYKDDDDKV

Tag: C-Myc/DDK

Predicted MW: 16.7 kDa

Concentration: >0.05 µg/µL as determined by microplate BCA method

Purity: > 80% as determined by SDS-PAGE and Coomassie blue staining

Buffer: 25 mM Tris-HCl, 100 mM glycine, pH 7.3, 10% glycerol

Preparation: Recombinant protein was captured through anti-DDK affinity column followed by conventional chromatography steps.

Note: For testing in cell culture applications, please filter before use. Note that you may experience some loss of protein during the filtration process.

Storage: Store at -80°C.

Stability: Stable for 12 months from the date of receipt of the product under proper storage and handling conditions. Avoid repeated freeze-thaw cycles.

RefSeq: [NP_066299](#)

Locus ID: 4637

UniProt ID: [P60660](#)



[View online »](#)

RefSeq Size: 827

Cytogenetics: 12q13.2

RefSeq ORF: 453

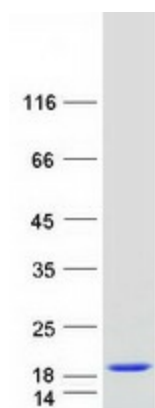
Synonyms: ESMLC; LC17; LC17-GI; LC17-NM; LC17A; LC17B; MLC-3; MLC1SM; MLC3NM; MLC3SM

Summary: Myosin is a hexameric ATPase cellular motor protein. It is composed of two heavy chains, two nonphosphorylatable alkali light chains, and two phosphorylatable regulatory light chains. This gene encodes a myosin alkali light chain that is expressed in smooth muscle and non-muscle tissues. Genomic sequences representing several pseudogenes have been described and two transcript variants encoding different isoforms have been identified for this gene. [provided by RefSeq, Jul 2008]

Protein Families: Druggable Genome

Protein Pathways: Vascular smooth muscle contraction

Product images:



Coomassie blue staining of purified MYL6 protein (Cat# [TP300708]). The protein was produced from HEK293T cells transfected with MYL6 cDNA clone (Cat# [RC200708]) using MegaTran 2.0 (Cat# [TT210002]).