

Product datasheet for **TP300704M**

NCF2 (NM_000433) Human Recombinant Protein

Product data:

Product Type:	Recombinant Proteins
Description:	Recombinant protein of human neutrophil cytosolic factor 2 (NCF2), transcript variant 1, 100 µg
Species:	Human
Expression Host:	HEK293T
Expression cDNA Clone or AA Sequence:	>RC200704 representing NM_000433 Red =Cloning site Green =Tags(s)

MSLVEAISLWNEGVLAADKKDWKGALDAFSAVQDPHSRICFNIGCMYILKNMTEAEKAFTRSINRDKHL
AVAYFQRGMLYYQTEKYDLAIKDLKEALIQLRGNQLIDYKILGLQFKLFACEVLYNIAFMYAKKEEWKKA
EEQLALATSMKSEPRHSKIDKAMECVWKQKLYEPVIVPVGRLFRPNERQVAQLAKKDYLKATVVASVVD
QDSFSGFAPLQPQAAEPPRPKTP EIFRALEGEAHRVLFVFPETKEELQVMPGNIVFVLKKGNDNWATV
MFNGQKGLVPCNYLEPVELRIHPQQPQEESPQSDIPAPPSSKAPGRPQLSPGQKQKEEPKEVKLSVPM
PYTLKVHYKYTVVMKTQGPLPYSQVRDMVSKKLELRLEQTKLSYRPRDSNELVPLSEDSMKDAWGQVKNY
CLTLWCENTVGDQGFDPKESEKADANNQTTEPQLKKGQSVEALFSYEATQPEDLEFQEGDIILVLSKV
NEEWLEGECKGKVGIFPKVFVEDCATTDLLESTRREV

TRTRPLEQKLISEEDLAANDILDYKDDDDKV

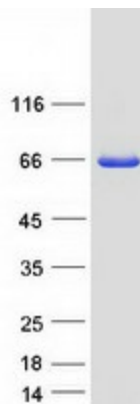
Tag:	C-Myc/DDK
Predicted MW:	59.6 kDa
Concentration:	>0.05 µg/µL as determined by microplate BCA method
Purity:	> 80% as determined by SDS-PAGE and Coomassie blue staining
Buffer:	25 mM Tris-HCl, 100 mM glycine, pH 7.3, 10% glycerol
Preparation:	Recombinant protein was captured through anti-DDK affinity column followed by conventional chromatography steps.
Note:	For testing in cell culture applications, please filter before use. Note that you may experience some loss of protein during the filtration process.
Storage:	Store at -80°C.



[View online »](#)

Stability:	Stable for 12 months from the date of receipt of the product under proper storage and handling conditions. Avoid repeated freeze-thaw cycles.
RefSeq:	NP_000424
Locus ID:	4688
UniProt ID:	P19878 , A0A0S2Z457
RefSeq Size:	2406
Cytogenetics:	1q25.3
RefSeq ORF:	1578
Synonyms:	NCF-2; NOXA2; P67-PHOX; P67PHOX
Summary:	This gene encodes neutrophil cytosolic factor 2, the 67-kilodalton cytosolic subunit of the multi-protein NADPH oxidase complex found in neutrophils. This oxidase produces a burst of superoxide which is delivered to the lumen of the neutrophil phagosome. Mutations in this gene, as well as in other NADPH oxidase subunits, can result in chronic granulomatous disease, a disease that causes recurrent infections by catalase-positive organisms. Alternative splicing results in multiple transcript variants encoding different isoforms. [provided by RefSeq, Jun 2010]
Protein Families:	Druggable Genome
Protein Pathways:	Leukocyte transendothelial migration

Product images:



Coomassie blue staining of purified NCF2 protein (Cat# [TP300704]). The protein was produced from HEK293T cells transfected with NCF2 cDNA clone (Cat# [RC200704]) using MegaTran 2.0 (Cat# [TT210002]).