

Product datasheet for **TP300698**

PRPS1 (NM_002764) Human Recombinant Protein

Product data:

Product Type:	Recombinant Proteins
Description:	Recombinant protein of human phosphoribosyl pyrophosphate synthetase 1 (PRPS1), 20 µg
Species:	Human
Expression Host:	HEK293T
Expression cDNA Clone or AA Sequence:	>RC200698 protein sequence Red =Cloning site Green =Tags(s)

MPNIKIFSGSSHQDLSQKIADRLGLELGKVVTKKFSNQETCVEIGESVRGEDVYIVQSGCGEINDNLMEL
 LIMINACKIASASRVTAVIPCFPYARQDKKDKSRAPISAKLVANMLSVAGADHIITMDLHASQIQGFFDI
 PVDNLYAEPVCLKWIRENISEWRNCTIVSPDAGGAKRVTSIADRLNVDFAIHKKERKKANEVDRMVLVGD
 VKDRVAILVDDMADTCGTICHAADKLLSAGATRVYAILTHGIFSGPAISRINNACFEAVVVTNTIPQEDK
 MKHCSKIQVIDISMILAEAIRRTHNGESVSYLFSHVPL

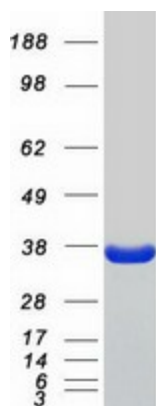
TRTRPLEQKLISEEDLAANDILDYKDDDDKV

Tag:	C-Myc/DDK
Predicted MW:	34.7 kDa
Concentration:	>0.05 µg/µL as determined by microplate BCA method
Purity:	> 80% as determined by SDS-PAGE and Coomassie blue staining
Buffer:	25 mM Tris-HCl, 100 mM glycine, pH 7.3, 10% glycerol
Preparation:	Recombinant protein was captured through anti-DDK affinity column followed by conventional chromatography steps.
Note:	For testing in cell culture applications, please filter before use. Note that you may experience some loss of protein during the filtration process.
Storage:	Store at -80°C.
Stability:	Stable for 12 months from the date of receipt of the product under proper storage and handling conditions. Avoid repeated freeze-thaw cycles.
RefSeq:	<u>NP_002755</u>
Locus ID:	5631


[View online »](#)

UniProt ID:	<u>P60891</u>
RefSeq Size:	2156
Cytogenetics:	Xq22.3
RefSeq ORF:	954
Synonyms:	ARTS; CMTX5; DFN2; DFNX1; PPRibP; PRS-I; PRSI
Summary:	This gene encodes an enzyme that catalyzes the phosphoribosylation of ribose 5-phosphate to 5-phosphoribosyl-1-pyrophosphate, which is necessary for purine metabolism and nucleotide biosynthesis. Defects in this gene are a cause of phosphoribosylpyrophosphate synthetase superactivity, Charcot-Marie-Tooth disease X-linked recessive type 5 and Arts Syndrome. Two transcript variants encoding different isoforms have been found for this gene. [provided by RefSeq, Feb 2011]
Protein Families:	Druggable Genome
Protein Pathways:	Metabolic pathways, Pentose phosphate pathway, Purine metabolism

Product images:



Coomassie blue staining of purified PRPS1 protein (Cat# TP300698). The protein was produced from HEK293T cells transfected with PRPS1 cDNA clone (Cat# [RC200698]) using MegaTran 2.0 (Cat# [TT210002]).