

Product datasheet for **TP300694L**

PCLAF (NM_014736) Human Recombinant Protein

Product data:

Product Type:	Recombinant Proteins
Description:	Recombinant protein of human KIAA0101 (KIAA0101), transcript variant 1, 1 mg
Species:	Human
Expression Host:	HEK293T
Expression cDNA Clone or AA Sequence:	>RC200694 protein sequence Red =Cloning site Green =Tags(s)
	MVRTKADSVPGTyrKVAARAPRKVLGSSTSATNSTSVSSRKAENKYAGGNPVCVRPTPKWQKGIGEFFR LSPKDSEKENQIPEEAGSSGLGKAKRKACPLQPDHTNDEKE
	TRTRPLEQKLISEEDLAANDILDYKDDDDKV
Tag:	C-Myc/DDK
Predicted MW:	11.8 kDa
Concentration:	>0.05 µg/µL as determined by microplate BCA method
Purity:	> 80% as determined by SDS-PAGE and Coomassie blue staining
Buffer:	25 mM Tris-HCl, 100 mM glycine, pH 7.3, 10% glycerol
Preparation:	Recombinant protein was captured through anti-DDK affinity column followed by conventional chromatography steps.
Note:	For testing in cell culture applications, please filter before use. Note that you may experience some loss of protein during the filtration process.
Storage:	Store at -80°C.
Stability:	Stable for 12 months from the date of receipt of the product under proper storage and handling conditions. Avoid repeated freeze-thaw cycles.
RefSeq:	NP_055551
Locus ID:	9768
UniProt ID:	Q15004
RefSeq Size:	1515
Cytogenetics:	15q22.31



[View online »](#)

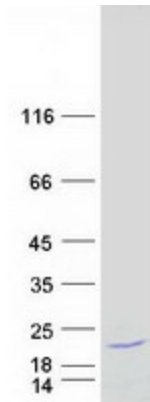
RefSeq ORF: 333

Synonyms: KIAA0101; L5; NS5ATP9; OEATC; OEATC-1; OEATC1; p15(PAF); p15/PAF; p15PAF; PAF; PAF15

Summary: PCNA-binding protein that acts as a regulator of DNA repair during DNA replication. Following DNA damage, the interaction with PCNA is disrupted, facilitating the interaction between monoubiquitinated PCNA and the translesion DNA synthesis DNA polymerase eta (POLH) at stalled replisomes, facilitating the bypass of replication-fork-blocking lesions. Also acts as a regulator of centrosome number.[UniProtKB/Swiss-Prot Function]

Protein Families: Druggable Genome

Product images:



Coomassie blue staining of purified PCLAF protein (Cat# [TP300694]). The protein was produced from HEK293T cells transfected with PCLAF cDNA clone (Cat# [RC200694]) using MegaTran 2.0 (Cat# [TT210002]).