

Product datasheet for **TP300689M**

RPL24 (NM_000986) Human Recombinant Protein

Product data:

Product Type:	Recombinant Proteins
Description:	Recombinant protein of human ribosomal protein L24 (RPL24), 100 µg
Species:	Human
Expression Host:	HEK293T
Expression cDNA Clone or AA Sequence:	>RC200689 protein sequence Red =Cloning site Green =Tags(s)
	 MKVELCSFSGYKIYPGHGRRYARTDGKVFQFLNAKCESAFLSKRNPRQINWTVLYRRKHKKGQSEEIQKK RTRRAVKFQRAITGASLADIMAKRNQKPEVRKAQREQAIRAAKEAKKAKQASKKTAMAAAKAPTKAAPKQ KIVKPVKVSAPRVGGKR TRTRPLEQKLISEEDLAANDILDYKDDDDKV
Tag:	C-Myc/DDK
Predicted MW:	17.6 kDa
Concentration:	>0.05 µg/µL as determined by microplate BCA method
Purity:	> 80% as determined by SDS-PAGE and Coomassie blue staining
Buffer:	25 mM Tris-HCl, 100 mM glycine, pH 7.3, 10% glycerol
Preparation:	Recombinant protein was captured through anti-DDK affinity column followed by conventional chromatography steps.
Note:	For testing in cell culture applications, please filter before use. Note that you may experience some loss of protein during the filtration process.
Storage:	Store at -80°C.
Stability:	Stable for 12 months from the date of receipt of the product under proper storage and handling conditions. Avoid repeated freeze-thaw cycles.
RefSeq:	<u>NP_000977</u>
Locus ID:	6152
UniProt ID:	<u>P83731</u> , <u>V9HW01</u>
RefSeq Size:	579



[View online »](#)

Cytogenetics: 3q12.3

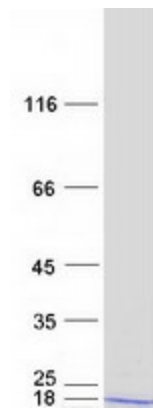
RefSeq ORF: 471

Synonyms: HEL-S-310; L24

Summary: Ribosomes, the organelles that catalyze protein synthesis, consist of a small 40S subunit and a large 60S subunit. Together these subunits are composed of 4 RNA species and approximately 80 structurally distinct proteins. This gene encodes a ribosomal protein that is a component of the 60S subunit. The protein belongs to the L24E family of ribosomal proteins. It is located in the cytoplasm. This gene has been referred to as ribosomal protein L30 because the encoded protein shares amino acid identity with the L30 ribosomal proteins from *S. cerevisiae*; however, its official name is ribosomal protein L24. As is typical for genes encoding ribosomal proteins, there are multiple processed pseudogenes of this gene dispersed through the genome. [provided by RefSeq, Jul 2008]

Protein Pathways: Ribosome

Product images:



Coomassie blue staining of purified RPL24 protein (Cat# [TP300689]). The protein was produced from HEK293T cells transfected with RPL24 cDNA clone (Cat# [RC200689]) using MegaTran 2.0 (Cat# [TT210002]).