

Product datasheet for **TP300686L**

TCP1 alpha (TCP1) (NM_030752) Human Recombinant Protein

Product data:

Product Type:	Recombinant Proteins
Description:	Recombinant protein of human t-complex 1 (TCP1), transcript variant 1, 1 mg
Species:	Human
Expression Host:	HEK293T
Expression cDNA Clone or AA Sequence:	>RC200686 protein sequence Red =Cloning site Green =Tags(s)

MEGPLSVFGDRSTGETIRSQNVMAAASIANIVKSSLGPVGLDKMLVDDIGDVTITNDGATILKLEVEHP
AAKVLCELADLQDKEVGDGTTSVIIAAELLKNADELVKQKIHPTSVISGYRLACKEAVRYINENLIVNT
DELGRDCLINAAKTSMSSKIINGDFFANMVVDAVLAIKYTDIRGQPRYPVNSVNIKAHGRSQMESML
ISGYALNCVGSQGMKPRIVNAKIACLDFSLQKTKMKLGQVQVITDPEKLDQIRQRESKITKERIQKILA
TGANVILTTGGIDDMCLKYFVEAGAMAVRRVLKRDLKRIAKASGATILSTLANLEGEETFEAAMLGQAE
VVQERICDDELILIKNTKARTSASIILRGANDFMCDEMERSLHDALCVKRVLESKSVVPGGGAVEAALS
IYLENYATSMGSREQLAIAEFARSLVIPNTLAVNAAQDSTDLVAKLRAFHNQAQVNPENKLNKWIWGLDL
SNGKPRDNKQAGVFEPTIVKVKSLKFATEAAITLRIDDLKHPESKDDDKHGSYEDAVHSGALND

TRTRPLEQKLISEEDLAANDILDYKDDDDKV

Tag:	C-Myc/DDK
Predicted MW:	60.2 kDa
Concentration:	>0.05 µg/µL as determined by microplate BCA method
Purity:	> 80% as determined by SDS-PAGE and Coomassie blue staining
Buffer:	25 mM Tris-HCl, 100 mM glycine, pH 7.3, 10% glycerol
Preparation:	Recombinant protein was captured through anti-DDK affinity column followed by conventional chromatography steps.
Note:	For testing in cell culture applications, please filter before use. Note that you may experience some loss of protein during the filtration process.
Storage:	Store at -80°C.
Stability:	Stable for 12 months from the date of receipt of the product under proper storage and handling conditions. Avoid repeated freeze-thaw cycles.

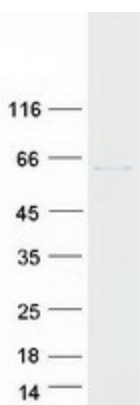


[View online »](#)

RefSeq:	NP_110379
Locus ID:	6950
UniProt ID:	P17987
RefSeq Size:	2463
Cytogenetics:	6q25.3
RefSeq ORF:	1668
Synonyms:	CCT-alpha; CCT1; CCTa; D6S230E; TCP-1-alpha

Summary: The protein encoded by this gene is a molecular chaperone that is a member of the chaperonin containing TCP1 complex (CCT), also known as the TCP1 ring complex (TRiC). This complex consists of two identical stacked rings, each containing eight different proteins. Unfolded polypeptides enter the central cavity of the complex and are folded in an ATP-dependent manner. The complex folds various proteins, including actin and tubulin. Alternate transcriptional splice variants of this gene, encoding different isoforms, have been characterized. In addition, three pseudogenes that appear to be derived from this gene have been found. [provided by RefSeq, Jun 2010]

Product images:



Coomassie blue staining of purified TCP1 protein (Cat# [TP300686]). The protein was produced from HEK293T cells transfected with TCP1 cDNA clone (Cat# [RC200686]) using MegaTran 2.0 (Cat# [TT210002]).