

Product datasheet for **TP300686**

TCP1 alpha (TCP1) (NM_030752) Human Recombinant Protein

Product data:

Product Type: Recombinant Proteins

Description: Recombinant protein of human t-complex 1 (TCP1), transcript variant 1, 20 µg

Species: Human

Expression Host: HEK293T

Expression cDNA Clone or AA Sequence: >RC200686 protein sequence
Red=Cloning site **Green**=Tags(s)

MEGPLSVFGDRSTGETIRSQNVMAAASIANIVKSSLGPVGLDKMLVDDIGDVTITNDGATILKLEVEHP
AAKVLCELADLQDKEVGDTTSVVIAAELLKNADELVKQKIHPTSVISGYRLACKEAVRYINENLIVNT
DELGRDCLINAAKTSMSKIIINGDFFANMVVDVLAIKYTDIRGQPRYPVNSVNILKAHGRSQMESML
ISGYALNCVGSQGMPKRIVNAKIACLDLQKTKMKLGVQVITDPEKLDQIRQRESKITKERIKILA
TGANVILTTGGIDDMCLKYFVEAGAMAVRRVLKRDLEKRIKASGATILSTLANLEGEETFEAAMLGQAE
VVQERICDDELILIKNTKARTSASIIIRGANDFMCEMERSLHDLVCKRVLESKSVPPGGGAVEAALS
IYLENYATSMGSRQLAIAEFARSLVIPNTLAVNAAQDSTDLVAKLRAFHNQAQVNPENKLNKWLGLDL
SNGKPRDNKQAGVFEPTIVKVKSLKFATEAAILRIDDLIKLHPESKDDKHGSYEDAVHSGALND

TRTRPLEQKLISEEDLAANDILDYKDDDDKV

Tag: C-Myc/DDK

Predicted MW: 60.2 kDa

Concentration: >0.05 µg/µL as determined by microplate BCA method

Purity: > 80% as determined by SDS-PAGE and Coomassie blue staining

Buffer: 25 mM Tris-HCl, 100 mM glycine, pH 7.3, 10% glycerol

Preparation: Recombinant protein was captured through anti-DDK affinity column followed by conventional chromatography steps.

Note: For testing in cell culture applications, please filter before use. Note that you may experience some loss of protein during the filtration process.

Storage: Store at -80°C.

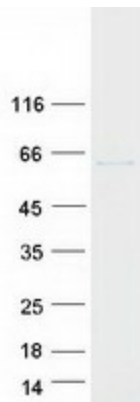
Stability: Stable for 12 months from the date of receipt of the product under proper storage and handling conditions. Avoid repeated freeze-thaw cycles.



[View online »](#)

RefSeq:	<u>NP_110379</u>
Locus ID:	6950
UniProt ID:	<u>P17987</u>
RefSeq Size:	2463
Cytogenetics:	6q25.3
RefSeq ORF:	1668
Synonyms:	CCT-alpha; CCT1; CCTa; D6S230E; TCP-1-alpha
Summary:	<p>The protein encoded by this gene is a molecular chaperone that is a member of the chaperonin containing TCP1 complex (CCT), also known as the TCP1 ring complex (TRiC). This complex consists of two identical stacked rings, each containing eight different proteins. Unfolded polypeptides enter the central cavity of the complex and are folded in an ATP-dependent manner. The complex folds various proteins, including actin and tubulin. Alternate transcriptional splice variants of this gene, encoding different isoforms, have been characterized. In addition, three pseudogenes that appear to be derived from this gene have been found. [provided by RefSeq, Jun 2010]</p>

Product images:



Coomassie blue staining of purified TCP1 protein (Cat# TP300686). The protein was produced from HEK293T cells transfected with TCP1 cDNA clone (Cat# [RC200686]) using MegaTran 2.0 (Cat# [TT210002]).