

## Product datasheet for TP300675L

### RAB8A (NM\_005370) Human Recombinant Protein

#### Product data:

Product Type:	Recombinant Proteins
Description:	Recombinant protein of human RAB8A, member RAS oncogene family (RAB8A), 1 mg
Species:	Human
Expression Host:	HEK293T
Expression cDNA Clone or AA Sequence:	>RC200675 protein sequence <b>Red</b> =Cloning site <b>Green</b> =Tags(s)
	MAKTYDYLFKLLLLIGDSGVGKTCVLFSEDAFNSTFISTIGIDFKIRTIELDGGKRIKLQIWDTAGQERF RTITTAYYRGAMGIMLVYDITNEKSFNIRNWIRNIEEHASADVEKMILGNKCDVNDKRQVSKERGEKLA LDYGIFMETSAKANINVENAFFTLARDIKAKMDKKLEGNSPQGSNQGVKITPDQQKRSSFFRCVLL
	<b>TRTRPLEQKLISEEDLAANDILDYKDDDDKV</b>
Tag:	C-Myc/DDK
Predicted MW:	23.5 kDa
Concentration:	>0.05 µg/µL as determined by microplate BCA method
Purity:	> 80% as determined by SDS-PAGE and Coomassie blue staining
Buffer:	25 mM Tris-HCl, 100 mM glycine, pH 7.3, 10% glycerol
Preparation:	Recombinant protein was captured through anti-DDK affinity column followed by conventional chromatography steps.
Note:	For testing in cell culture applications, please filter before use. Note that you may experience some loss of protein during the filtration process.
Storage:	Store at -80°C.
Stability:	Stable for 12 months from the date of receipt of the product under proper storage and handling conditions. Avoid repeated freeze-thaw cycles.
RefSeq:	<a href="#">NP_005361</a>
Locus ID:	4218
UniProt ID:	<a href="#">P61006</a> , <a href="#">A0A024R7I3</a>
RefSeq Size:	2194



[View online »](#)

Cytogenetics: 19p13.11

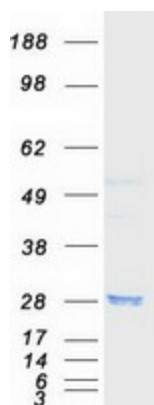
RefSeq ORF: 621

Synonyms: MEL; RAB8

**Summary:** The protein encoded by this gene is a member of the RAS superfamily which are small GTP/GDP-binding proteins with an average size of 200 amino acids. The RAS-related proteins of the RAB/YPT family may play a role in the transport of proteins from the endoplasmic reticulum to the Golgi and the plasma membrane. This protein shares 97%, 96%, and 51% similarity with the dog RAB8, mouse MEL, and mouse YPT1 proteins, respectively and contains the 4 GTP/GDP-binding sites that are present in all the RAS proteins. The putative effector-binding site of this protein is similar to that of the RAB/YPT proteins. However, this protein contains a C-terminal CAAX motif that is characteristic of many RAS superfamily members but which is not found in YPT1 and the majority of RAB proteins. Although this gene was isolated as a transforming gene from a melanoma cell line, no linkage between MEL and malignant melanoma has been demonstrable. This oncogene is located 800 kb distal to MY09B on chromosome 19p13.1. [provided by RefSeq, Jul 2008]

**Protein Families:** Druggable Genome, Transcription Factors

### Product images:



Coomassie blue staining of purified RAB8A protein (Cat# [TP300675]). The protein was produced from HEK293T cells transfected with RAB8A cDNA clone (Cat# [RC200675]) using MegaTran 2.0 (Cat# [TT210002]).