

## Product datasheet for **TP300671**

### PPP2R4 (PTPA) (NM\_178000) Human Recombinant Protein

#### Product data:

Product Type:	Recombinant Proteins
Description:	Recombinant protein of human protein phosphatase 2A activator, regulatory subunit 4 (PPP2R4), transcript variant 2, 20 µg
Species:	Human
Expression Host:	HEK293T
Expression cDNA Clone or AA Sequence:	>RC200671 protein sequence <b>Red</b> =Cloning site <b>Green</b> =Tags(s)

MAEGERQPPPDSSSEAPPATQNFIIPKKEIHTVPDMGKWKRSQAYADYIGFILTLNEGKVGKKLTFEYRV  
SEAIEKLVALLNTLDRWIDETPPVDQPSRFGNKAYRTWYAKLDEEAENLVATVVPHTLAAAVPEVAVYLK  
ESVGNSTRIDYGTGHEAAFAAFLCCLCKIGVLRVDDQIAIVFKVFNRYLEVMRKLQKTYRMEPAGSQGVW  
GLDDFQFLPFIWGSSQLIDHPYLEPRHFVDEKAVNENHKDYMFLECILFITEMKTGPFAEHSNQLWNISA  
VPSWSKVNQGLIRMYKAECLEKFPVIQHFKFGSLLPIHPVTSG

**TRTRPLEQKLISEEDLAANDILDYKDDDDKV**

Tag:	C-Myc/DDK
Predicted MW:	36.6 kDa
Concentration:	>0.05 µg/µL as determined by microplate BCA method
Purity:	> 80% as determined by SDS-PAGE and Coomassie blue staining
Buffer:	25 mM Tris-HCl, 100 mM glycine, pH 7.3, 10% glycerol
Preparation:	Recombinant protein was captured through anti-DDK affinity column followed by conventional chromatography steps.
Note:	For testing in cell culture applications, please filter before use. Note that you may experience some loss of protein during the filtration process.
Storage:	Store at -80°C.
Stability:	Stable for 12 months from the date of receipt of the product under proper storage and handling conditions. Avoid repeated freeze-thaw cycles.
RefSeq:	<a href="#">NP_821067</a>
Locus ID:	5524



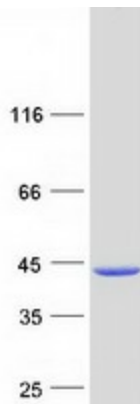
[View online »](#)

UniProt ID: [Q15257](#), [Q15257-2](#)  
RefSeq Size: 2764  
Cytogenetics: 9q34.11  
RefSeq ORF: 969  
Synonyms: PP2A; PPP2R4; PR53

**Summary:** Protein phosphatase 2A is one of the four major Ser/Thr phosphatases and is implicated in the negative control of cell growth and division. Protein phosphatase 2A holoenzymes are heterotrimeric proteins composed of a structural subunit A, a catalytic subunit C, and a regulatory subunit B. The regulatory subunit is encoded by a diverse set of genes that have been grouped into the B/PR55, B'/PR61, and B''/PR72 families. These different regulatory subunits confer distinct enzymatic specificities and intracellular localizations to the holoenzyme. The product of this gene belongs to the B' family. This gene encodes a specific phosphotyrosyl phosphatase activator of the dimeric form of protein phosphatase 2A. Alternative splicing results in multiple transcript variants encoding different isoforms. [provided by RefSeq, Jul 2008]

**Protein Families:** Druggable Genome, Phosphatase

### Product images:



Coomassie blue staining of purified PTPA protein (Cat# TP300671). The protein was produced from HEK293T cells transfected with PTPA cDNA clone (Cat# [RC200671]) using MegaTran 2.0 (Cat# [TT210002]).