

Product datasheet for **TP300668M**

SERPINB6 (NM_004568) Human Recombinant Protein

Product data:

Product Type:	Recombinant Proteins
Description:	Recombinant protein of human serpin peptidase inhibitor, clade B (ovalbumin), member 6 (SERPINB6), 100 µg
Species:	Human
Expression Host:	HEK293T
Expression cDNA Clone or AA Sequence:	>RC200668 representing NM_004568 Red =Cloning site Green =Tags(s) MDVLAEANGTFALNLLKTLGKDNSKNVFFSPMSMSCALAMVYMGAKGNTAAQMAQILSFNKSGGGGDIHQ GFQSLLEVNKTGTQYLLRMANRLFGEKSCDFLSSFRDSCQKFYQAEMEELDFISAVEKSRKHINTWVAE KTEGKIAELLSPGSVDPLTRLVLVNAVYFRGNWDEQFDKENTEERLFKVSKNEEKPVQMMFKQSTFKKTY IGEIFTQILVLPYVGKELNMIIMLPDETTDLRTVEKELTYEFVEWTRLDMMDEEEVEVSLPRFKLEESY DMESVLRNLGMTDAFELGKADFGMSQTDLSLSKWVHKSFVEVNEEGTEAAAAATAAIMMMRCARFVPRFC ADHPFLFFIQHSKTINGILFCGRFSSP TRTRPLEQKLISEEDLAANDILDYKDDDDKV
Tag:	C-Myc/DDK
Predicted MW:	42.4 kDa
Concentration:	>0.05 µg/µL as determined by microplate BCA method
Purity:	> 80% as determined by SDS-PAGE and Coomassie blue staining
Buffer:	25 mM Tris-HCl, 100 mM glycine, pH 7.3, 10% glycerol
Preparation:	Recombinant protein was captured through anti-DDK affinity column followed by conventional chromatography steps.
Note:	For testing in cell culture applications, please filter before use. Note that you may experience some loss of protein during the filtration process.
Storage:	Store at -80°C.
Stability:	Stable for 12 months from the date of receipt of the product under proper storage and handling conditions. Avoid repeated freeze-thaw cycles.
RefSeq:	<u>NP_004559</u>



[View online »](#)

Locus ID: 5269

UniProt ID: [P35237](#), [A0A024QZX3](#)

RefSeq Size: 1665

Cytogenetics: 6p25.2

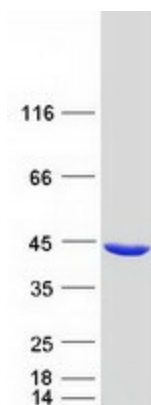
RefSeq ORF: 1128

Synonyms: CAP; DFNB91; MSTP057; PI-6; PI6; PTI; SPI3

Summary: The protein encoded by this gene is a member of the serpin (serine proteinase inhibitor) superfamily, and ovalbumin(ov)-serpin subfamily. It was originally discovered as a placental thrombin inhibitor. The mouse homolog was found to be expressed in the hair cells of the inner ear. Mutations in this gene are associated with nonsyndromic progressive hearing loss, suggesting that this serpin plays an important role in the inner ear in the protection against leakage of lysosomal content during stress, and that loss of this protection results in cell death and sensorineural hearing loss. Alternatively spliced transcript variants have been found for this gene. [provided by RefSeq, Sep 2010]

Protein Families: Druggable Genome

Product images:



Coomassie blue staining of purified SERPINB6 protein (Cat# [TP300668]). The protein was produced from HEK293T cells transfected with SERPINB6 cDNA clone (Cat# [RC200668]) using MegaTran 2.0 (Cat# [TT210002]).