

## Product datasheet for **TP300663M**

### Melanoma gp100 (PMEL) (NM\_006928) Human Recombinant Protein

#### Product data:

**Product Type:** Recombinant Proteins  
**Description:** Recombinant protein of human silver homolog (mouse) (SILV), 100 µg  
**Species:** Human  
**Expression Host:** HEK293T  
**Expression cDNA Clone or AA Sequence:** >RC200663 representing NM\_006928  
Red=Cloning site Green=Tags(s)

MDLVLKRCLLHLAVIGALLAVGATKVP RNQDWLGVSRQLRTKAWNRQLYPEWTEAQR LDCWRGGQVSLKV  
 SNDGPTLIGANASFIALNFPGSQKVL PDGQVIWVNNTIINGSQVWGGQPVPYQETDDACIFPDGGPCPS  
 GSWSQKRSFVYVWKTWGQYWQVLGGPVSGLSIGTGRAMLGTHMEVTVYHRRGSRSYVPLAHSSSAFTIT  
 DQVPFSVSVSQLRALDGGNKHFLRNQPLTFALQLHDPSGYLAEADLSYTWDFGDSSGTLISRALVWTHY  
 LEPGPVTAQVVLQAAIPLTSCGSSPVP GTTDGHRPTAEAPNTTAGQVPTTEVGTTPGQAPTAEPSGTTT  
 VQVPTTEVISTAPVQMPTAESTGMTPEKVPVSEVMGTTLAEMSTPEATGMTPAEVSIVLSGTTAAQVTT  
 TEWVETTARELPIPEPEGPDASSIMSTESITGSLGPLLDGTATLRLVQRVPLDCVLYRYGFSVTLDIV  
 QGIESAEILQAVPSGEGDAFELTVSCQGGLPKEACMEISSPGCQPPAQR LQCQVLPSPACQLVLHQILKG  
 GSGTYCLNVSLADTNSLAVVSTQLIMPGQEAGLGQVPLIVGILLVLMAVVLASLIYRRRLMKQDFSVPQL  
 PHSSSHWLRLPRIFCSCPIGENSPLLSGQQV

TRTRPLEQKLISEEDLAANDILDYKDDDDKV

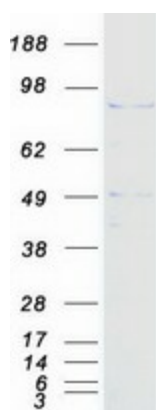
**Tag:** C-Myc/DDK  
**Predicted MW:** 70.1 kDa  
**Concentration:** >0.05 µg/µL as determined by microplate BCA method  
**Purity:** > 80% as determined by SDS-PAGE and Coomassie blue staining  
**Buffer:** 25 mM Tris-HCl, 100 mM glycine, pH 7.3, 10% glycerol  
**Preparation:** Recombinant protein was captured through anti-DDK affinity column followed by conventional chromatography steps.  
**Note:** For testing in cell culture applications, please filter before use. Note that you may experience some loss of protein during the filtration process.  
**Storage:** Store at -80°C.



[View online »](#)

<b>Stability:</b>	Stable for 12 months from the date of receipt of the product under proper storage and handling conditions. Avoid repeated freeze-thaw cycles.
<b>RefSeq:</b>	<a href="#">NP_008859</a>
<b>Locus ID:</b>	6490
<b>UniProt ID:</b>	<a href="#">P40967</a>
<b>RefSeq Size:</b>	2143
<b>Cytogenetics:</b>	12q13.2
<b>RefSeq ORF:</b>	1983
<b>Synonyms:</b>	D12S53E; gp100; ME20; ME20-M; ME20M; P1; P100; PMEL17; SI; SIL; SILV
<b>Summary:</b>	This gene encodes a melanocyte-specific type I transmembrane glycoprotein. The encoded protein is enriched in melanosomes, which are the melanin-producing organelles in melanocytes, and plays an essential role in the structural organization of premelanosomes. This protein is involved in generating internal matrix fibers that define the transition from Stage I to Stage II melanosomes. This protein undergoes a complex pattern of posttranslational processing and modification that is essential to the proper functioning of the protein. A secreted form of this protein that is released by proteolytic ectodomain shedding may be used as a melanoma-specific serum marker. Alternate splicing results in multiple transcript variants. [provided by RefSeq, Jan 2011]
<b>Protein Families:</b>	Secreted Protein, Transmembrane

### Product images:



Coomassie blue staining of purified PMEL protein (Cat# [TP300663]). The protein was produced from HEK293T cells transfected with PMEL cDNA clone (Cat# [RC200663]) using MegaTran 2.0 (Cat# [TT210002]).