

Product datasheet for **TP300663L**

Melanoma gp100 (PMEL) (NM_006928) Human Recombinant Protein

Product data:

Product Type:	Recombinant Proteins
Description:	Recombinant protein of human silver homolog (mouse) (SILV), 1 mg
Species:	Human
Expression Host:	HEK293T
Expression cDNA Clone or AA Sequence:	>RC200663 representing NM_006928 Red =Cloning site Green =Tags(s)

MDLVLKRCLLHLAVIGALLAVGATKVP RNQDWLGVSRQLRTKAWNRQLYPEWTEAQR LDCWRGGQVSLKV
SNDGPTLIGANASFIALNFPGSQKVL PDGQVIWVNNTIINGSQVWGGQPVPYQETDDACIFPDGGPCPS
GSWSQKRSFVYVWKTWGQYWQVLGGPV SGLSIGTGRAMLGTHTMEVTVYHRRGSRSYVPLAHSSSAFTIT
DQVPFSVSVSQLRALDGGNKHFLRNQPLTFALQLHDPSGYLAEADLSYTWDFGDSSGTLISRALVWTHY
LEPGPVTAQVVLQAAIPLTSCGSSPVP GTTDGHRPTAEAPNTTAGQVPTTEVGTTPGQAPTAEPSGTTT
VQVPTTEVISTAPVQMPTAESTGMTPEKVPVSEVMGTTLAEMSTPEATGMTPAEVSIVLSGTTAAQVTT
TEWVETTARELPIPEPEGPDASSIMSTESITGSLGPLLDGTATLRLVQRVPLDCVLYRYGFSVTLDIV
QGIESAEILQAVPSGEGDAFELTVSCQGG LPKKEACMEISSPGCQPPAQR LQCQVLPSPACQLVLHQILKG
GSGTYCLNVSLADTNSLAVVSTQLIMPGQEAGLGQVPLIVGILLVLMAVVLASLIYRRRLMKQDFSVPQL
PHSSSHWLRLPRIFCSCPIGENSPLLSGQQV

TRTRPLEQKLISEEDLAANDILDYKDDDDKV

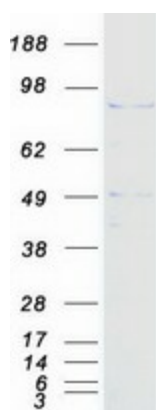
Tag:	C-Myc/DDK
Predicted MW:	70.1 kDa
Concentration:	>0.05 µg/µL as determined by microplate BCA method
Purity:	> 80% as determined by SDS-PAGE and Coomassie blue staining
Buffer:	25 mM Tris-HCl, 100 mM glycine, pH 7.3, 10% glycerol
Preparation:	Recombinant protein was captured through anti-DDK affinity column followed by conventional chromatography steps.
Note:	For testing in cell culture applications, please filter before use. Note that you may experience some loss of protein during the filtration process.
Storage:	Store at -80°C.



[View online »](#)

Stability:	Stable for 12 months from the date of receipt of the product under proper storage and handling conditions. Avoid repeated freeze-thaw cycles.
RefSeq:	NP_008859
Locus ID:	6490
UniProt ID:	P40967
RefSeq Size:	2143
Cytogenetics:	12q13.2
RefSeq ORF:	1983
Synonyms:	D12S53E; gp100; ME20; ME20-M; ME20M; P1; P100; PMEL17; SI; SIL; SILV
Summary:	This gene encodes a melanocyte-specific type I transmembrane glycoprotein. The encoded protein is enriched in melanosomes, which are the melanin-producing organelles in melanocytes, and plays an essential role in the structural organization of premelanosomes. This protein is involved in generating internal matrix fibers that define the transition from Stage I to Stage II melanosomes. This protein undergoes a complex pattern of posttranslational processing and modification that is essential to the proper functioning of the protein. A secreted form of this protein that is released by proteolytic ectodomain shedding may be used as a melanoma-specific serum marker. Alternate splicing results in multiple transcript variants. [provided by RefSeq, Jan 2011]
Protein Families:	Secreted Protein, Transmembrane

Product images:



Coomassie blue staining of purified PMEL protein (Cat# [TP300663]). The protein was produced from HEK293T cells transfected with PMEL cDNA clone (Cat# [RC200663]) using MegaTran 2.0 (Cat# [TT210002]).