

Product datasheet for **TP300652L**

TMED9 (NM_017510) Human Recombinant Protein

Product data:

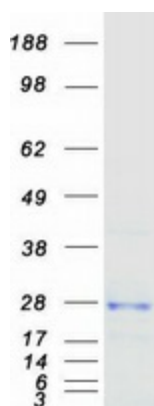
Product Type:	Recombinant Proteins
Description:	Recombinant protein of human transmembrane emp24 protein transport domain containing 9 (TMED9), 1 mg
Species:	Human
Expression Host:	HEK293T
Expression cDNA Clone or AA Sequence:	>RC200652 protein sequence Red =Cloning site Green =Tags(s)
	MAVELGVLLVRPRPGTGLGRVMRTLLLVLWLATRGSALYFHIGETEKKCFIEEIPDETMVIGNYRTQLYD KQREEYQPATPGLGMFVEVKDPEDKVILARQYGSEGRFTSHTPGEHQICLHSNSTKFSLFAGGMLRVH LDIQVGEHANDYAEIAAKDKLSELQLRVRQLVEQVEQIQKEQNYQRWREERFRQTSESTNQRVLWWSILQ TLILVAIGVWQMRHLKSFFFAKKLV
	TRTRPLEQKLISEEDLAANDILDYKDDDDKV
Tag:	C-Myc/DDK
Predicted MW:	27.1 kDa
Concentration:	>0.05 µg/µL as determined by microplate BCA method
Purity:	> 80% as determined by SDS-PAGE and Coomassie blue staining
Buffer:	25 mM Tris-HCl, 100 mM glycine, pH 7.3, 10% glycerol
Preparation:	Recombinant protein was captured through anti-DDK affinity column followed by conventional chromatography steps.
Note:	For testing in cell culture applications, please filter before use. Note that you may experience some loss of protein during the filtration process.
Storage:	Store at -80°C.
Stability:	Stable for 12 months from the date of receipt of the product under proper storage and handling conditions. Avoid repeated freeze-thaw cycles.
RefSeq:	<u>NP_059980</u>
Locus ID:	54732



[View online »](#)

UniProt ID:	<u>Q9BVK6, A0A024R7M0</u>
RefSeq Size:	1402
Cytogenetics:	5q35.3
RefSeq ORF:	705
Synonyms:	GMP25; HSGP25L2G; p24a2; p24alpha2; p25
Summary:	This gene is a member of a family of genes encoding transport proteins located in the endoplasmic reticulum and the Golgi. A similar gene in mouse is the target of microRNA miR-296, which is part of an imprinted cluster. [provided by RefSeq, Jul 2016]
Protein Families:	Transmembrane

Product images:



Coomassie blue staining of purified TMED9 protein (Cat# [TP300652]). The protein was produced from HEK293T cells transfected with TMED9 cDNA clone (Cat# [RC200652]) using MegaTran 2.0 (Cat# [TT210002]).