

Product datasheet for TP300651

PAX8 (NM_003466) Human Recombinant Protein

Product data:

Product Type:	Recombinant Proteins
Description:	Recombinant protein of human paired box 8 (PAX8), transcript variant PAX8A, 20 µg
Species:	Human
Expression Host:	HEK293T
Expression cDNA Clone or AA Sequence:	>RC200651 protein sequence Red=Cloning site Green=Tags(s)
	MPHNSIRSGHGGLNQLGGAFVNGRPLPEVVRQRIVDLAHQGVRPCDISRQLRVSHGCVSKILGRYYETGS IRPGVIGGSKPKVATPKVVEKIGDYKRQNPTMFAWEIRDLLAEGVCDNDTVPSVSSINRIIRTKVQQPF NLPMDSCVATKSLSPGHTLIPSSAVTPPESPQSDSLGSTYSINGLLGIAQPGSDKRKMDDSDQDSCRLSI DSQSSSSGPRKHLRTDAFSQHHLEPLECFERQHYPEAYASPSHTKGEQGLYPLLLNSTLDDGKATLTP SNTPLGRNLSTHQYTPVADPHSPFAIKQETPEVSSSSSTPSSLSSSAFLDLQQVGSVPPFNAFPHAAS VYGQFTGQALLSGREMGPTLPGYPPHIPTSGQGSYASSAIAGMVAGSEYSGNAYGHTPYSSYSEAWRFP NSSLLSPYYSSSTRPSAPPTTATAFDHL
	TRTRPLEQKLISEEDLAANDILDYKDDDDKV
Tag:	C-Myc/DDK
Predicted MW:	48 kDa
Concentration:	>0.05 µg/µL as determined by microplate BCA method
Purity:	> 80% as determined by SDS-PAGE and Coomassie blue staining
Buffer:	25 mM Tris-HCl, 100 mM glycine, pH 7.3, 10% glycerol
Preparation:	Recombinant protein was captured through anti-DDK affinity column followed by conventional chromatography steps.
Note:	For testing in cell culture applications, please filter before use. Note that you may experience some loss of protein during the filtration process.
Storage:	Store at -80°C.
Stability:	Stable for 12 months from the date of receipt of the product under proper storage and handling conditions. Avoid repeated freeze-thaw cycles.
RefSeq:	<u>NP_003457</u>



[View online »](#)

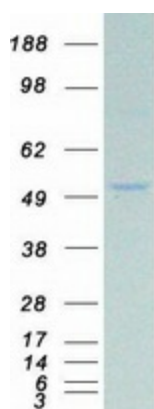
Locus ID:	7849
UniProt ID:	Q06710 , R9W7C9
RefSeq Size:	4065
Cytogenetics:	2q14.1
RefSeq ORF:	1350

Summary: This gene encodes a member of the paired box (PAX) family of transcription factors. Members of this gene family typically encode proteins that contain a paired box domain, an octapeptide, and a paired-type homeodomain. This nuclear protein is involved in thyroid follicular cell development and expression of thyroid-specific genes. Mutations in this gene have been associated with thyroid dysgenesis, thyroid follicular carcinomas and atypical follicular thyroid adenomas. Alternatively spliced transcript variants encoding different isoforms have been described. [provided by RefSeq, Mar 2010]

Protein Families: Druggable Genome, Transcription Factors

Protein Pathways: Pathways in cancer, Thyroid cancer

Product images:



Coomassie blue staining of purified PAX8 protein (Cat# TP300651). The protein was produced from HEK293T cells transfected with PAX8 cDNA clone (Cat# [RC200651]) using MegaTran 2.0 (Cat# [TT210002]).