

## Product datasheet for TP300643L

### Emerin (EMD) (NM\_000117) Human Recombinant Protein

#### Product data:

**Product Type:** Recombinant Proteins

**Description:** Recombinant protein of human emerin (EMD), 1 mg

**Species:** Human

**Expression Host:** HEK293T

**Expression cDNA Clone or AA Sequence:** >RC200643 protein sequence  
Red=Cloning site Green=Tags(s)

MDNYADLSDELTTLLRRYNIPHGPPVVGSTRRLYEKKIFEYETQRRRLSPPSSSAASSYSFSDLNSTRGD  
ADMYDLPKKEDALLYQSKGYNDYYEESYFTTRTYGEPESAGPSRAVRQSVTSFPDADAFHHQVHDDLL  
SSSEEECKDRERPMYGRDSAYQSITHYRPVSASRSSLDLSYYPTSSSTFSMSSSSSSSWLRRRAIRPEN  
RAPGAGLGQDRQVPLWGQLLLFLVIVLFFIYHFMQAEENPF

TRTRPLEQKLISEEDLAANDILDYKDDDDKV

**Tag:** C-Myc/DDK

**Predicted MW:** 28.8 kDa

**Concentration:** >0.05 µg/µL as determined by microplate BCA method

**Purity:** > 80% as determined by SDS-PAGE and Coomassie blue staining

**Buffer:** 25 mM Tris-HCl, 100 mM glycine, pH 7.3, 10% glycerol

**Preparation:** Recombinant protein was captured through anti-DDK affinity column followed by conventional chromatography steps.

**Note:** For testing in cell culture applications, please filter before use. Note that you may experience some loss of protein during the filtration process.

**Storage:** Store at -80°C.

**Stability:** Stable for 12 months from the date of receipt of the product under proper storage and handling conditions. Avoid repeated freeze-thaw cycles.

**RefSeq:** [NP\\_000108](#)

**Locus ID:** 2010

**UniProt ID:** [P50402](#)



[View online »](#)

RefSeq Size: 1370

Cytogenetics: Xq28

RefSeq ORF: 762

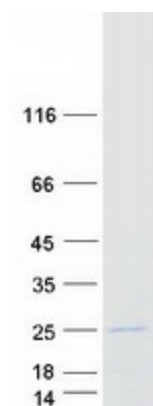
Synonyms: EDMD; LEMD5; STA

**Summary:** Emerin is a serine-rich nuclear membrane protein and a member of the nuclear lamina-associated protein family. It mediates membrane anchorage to the cytoskeleton. Dreifuss-Emery muscular dystrophy is an X-linked inherited degenerative myopathy resulting from mutation in the emerin gene. [provided by RefSeq, Jul 2008]

**Protein Families:** Druggable Genome, Transmembrane

**Protein Pathways:** Arrhythmogenic right ventricular cardiomyopathy (ARVC), Dilated cardiomyopathy, Hypertrophic cardiomyopathy (HCM)

### Product images:



Coomassie blue staining of purified EMD protein (Cat# [TP300643]). The protein was produced from HEK293T cells transfected with EMD cDNA clone (Cat# [RC200643]) using MegaTran 2.0 (Cat# [TT210002]).