

## Product datasheet for **TP300643**

### Emerin (EMD) (NM\_000117) Human Recombinant Protein

#### Product data:

Product Type:	Recombinant Proteins
Description:	Recombinant protein of human emerin (EMD), 20 µg
Species:	Human
Expression Host:	HEK293T
Expression cDNA Clone or AA Sequence:	>RC200643 protein sequence <b>Red</b> =Cloning site <b>Green</b> =Tags(s)

MDNYADLSDELTTLLRRYNIPHGPPVVGSTRRLYEKKIFEYETQRRRLSPSSSAASSYSFSDLNSTRGD  
ADMYDLPKKEDALLYQSKGYNDYYEESYFTTRTYGEPESAGPSRAVRQSVTSFPDADAFHHQVHDDLL  
SSSEEECKDRERPMYGRDSAYQSITHYRPVSASRSSLDLSYYPTSSSTFSMSSSSSSSWLRRRAIRPEN  
RAPGAGLGQDRQVPLWGQLLLFLVFVIVLFFIYHFMQAEENPF

**TRTRPLEQKLISEEDLAANDILDYKDDDDKV**

Tag:	C-Myc/DDK
Predicted MW:	28.8 kDa
Concentration:	>0.05 µg/µL as determined by microplate BCA method
Purity:	> 80% as determined by SDS-PAGE and Coomassie blue staining
Buffer:	25 mM Tris-HCl, 100 mM glycine, pH 7.3, 10% glycerol
Preparation:	Recombinant protein was captured through anti-DDK affinity column followed by conventional chromatography steps.
Note:	For testing in cell culture applications, please filter before use. Note that you may experience some loss of protein during the filtration process.
Storage:	Store at -80°C.
Stability:	Stable for 12 months from the date of receipt of the product under proper storage and handling conditions. Avoid repeated freeze-thaw cycles.
RefSeq:	<a href="#">NP_000108</a>
Locus ID:	2010
UniProt ID:	<a href="#">P50402</a>



[View online »](#)

RefSeq Size: 1370

Cytogenetics: Xq28

RefSeq ORF: 762

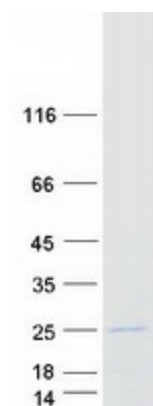
Synonyms: EDMD; LEMD5; STA

**Summary:** Emerin is a serine-rich nuclear membrane protein and a member of the nuclear lamina-associated protein family. It mediates membrane anchorage to the cytoskeleton. Dreifuss-Emery muscular dystrophy is an X-linked inherited degenerative myopathy resulting from mutation in the emerin gene. [provided by RefSeq, Jul 2008]

**Protein Families:** Druggable Genome, Transmembrane

**Protein Pathways:** Arrhythmogenic right ventricular cardiomyopathy (ARVC), Dilated cardiomyopathy, Hypertrophic cardiomyopathy (HCM)

### Product images:



Coomassie blue staining of purified EMD protein (Cat# TP300643). The protein was produced from HEK293T cells transfected with EMD cDNA clone (Cat# [RC200643]) using MegaTran 2.0 (Cat# [TT210002]).