

Product datasheet for **TP300641M**

NNMT (NM_006169) Human Recombinant Protein

Product data:

Product Type: Recombinant Proteins

Description: Recombinant protein of human nicotinamide N-methyltransferase (NNMT), 100 µg

Species: Human

Expression Host: HEK293T

Expression cDNA Clone or AA Sequence: >RC200641 protein sequence
Red=Cloning site **Green**=Tags(s)

MESGFTSKDITYLSHFNPRDYLEKYYKFGSRHSAESQILKHLKLNLFKIFCLDGVKGDLLIDIGSGPTIYQ
LLSACESFKEIWTDYSDQNLQELEKWLKKEPEAFDWSPVVTYVCDLEGNRVKGPKEEKLKQAVKQVLK
CDVTQSQPLGAVPLPPADCVLSTLCLDAACPDLPYCRALRNLSLLKPGGFLVIMDALKSSYIMIGEQQ
FSSLPLGREAVEAAVKEAGYTIWFEVISQSYSSTMANNEGLFSLVARKLSRPL

TRTRPLEQKLISEEDLAANDILDYKDDDDKV

Tag: C-Myc/DDK

Predicted MW: 29.4 kDa

Concentration: >0.05 µg/µL as determined by microplate BCA method

Purity: > 80% as determined by SDS-PAGE and Coomassie blue staining

Buffer: 25 mM Tris-HCl, 100 mM glycine, pH 7.3, 10% glycerol

Preparation: Recombinant protein was captured through anti-DDK affinity column followed by conventional chromatography steps.

Note: For testing in cell culture applications, please filter before use. Note that you may experience some loss of protein during the filtration process.

Storage: Store at -80°C.

Stability: Stable for 12 months from the date of receipt of the product under proper storage and handling conditions. Avoid repeated freeze-thaw cycles.

RefSeq: [NP_006160](#)

Locus ID: 4837

UniProt ID: [P40261](#), [Q6FH49](#)



[View online »](#)

RefSeq Size: 1579

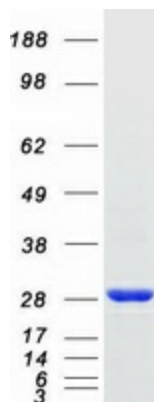
Cytogenetics: 11q23.2

RefSeq ORF: 792

Summary: N-methylation is one method by which drug and other xenobiotic compounds are metabolized by the liver. This gene encodes the protein responsible for this enzymatic activity which uses S-adenosyl methionine as the methyl donor. [provided by RefSeq, Jul 2008]

Protein Pathways: Metabolic pathways, Nicotinate and nicotinamide metabolism

Product images:



Coomassie blue staining of purified NNMT protein (Cat# [TP300641]). The protein was produced from HEK293T cells transfected with NNMT cDNA clone (Cat# [RC200641]) using MegaTran 2.0 (Cat# [TT210002]).