

Product datasheet for TP300638

MAN2B1 (NM_000528) Human Recombinant Protein

Product data:

| | |
|------------------|---|
| Product Type: | Recombinant Proteins |
| Description: | Purified recombinant protein of Homo sapiens mannosidase, alpha, class 2B, member 1 (MAN2B1) |
| Species: | Human |
| Expression Host: | HEK293T |
| Tag: | C-Myc/DDK |
| Predicted MW: | 108.7 kDa |
| Concentration: | >50 ug/mL as determined by microplate BCA method |
| Purity: | > 80% as determined by SDS-PAGE and Coomassie blue staining |
| Buffer: | 25 mM Tris.HCl, pH 7.3, 100 mM glycine, 10% glycerol |
| Preparation: | Recombinant protein was captured through anti-DDK affinity column followed by conventional chromatography steps. |
| Storage: | Store at -80°C. |
| Stability: | Stable for 12 months from the date of receipt of the product under proper storage and handling conditions. Avoid repeated freeze-thaw cycles. |
| RefSeq: | NP_000519 |
| Locus ID: | 4125 |
| RefSeq Size: | 3231 |
| Cytogenetics: | 19p13.13 |
| RefSeq ORF: | 3033 |
| Synonyms: | LAMAN; MANB |



[View online »](#)

Summary:

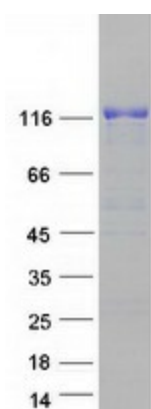
This gene encodes an enzyme that hydrolyzes terminal, non-reducing alpha-D-mannose residues in alpha-D-mannosides. Its activity is necessary for the catabolism of N-linked carbohydrates released during glycoprotein turnover and it is member of family 38 of glycosyl hydrolases. The full length protein is processed in two steps. First, a 49 aa leader sequence is cleaved off and the remainder of the protein is processed into 3 peptides of 70 kDa, 42 kDa (D) and 13/15 kDa (E). Next, the 70 kDa peptide is further processed into three peptides (A, B and C). The A, B and C peptides are disulfide-linked. Defects in this gene have been associated with lysosomal alpha-mannosidosis. Alternatively spliced transcript variants encoding different isoforms have been found for this gene. [provided by RefSeq, Mar 2010]

Protein Families:

Druggable Genome

Protein Pathways:

Lysosome, Other glycan degradation

Product images:

Coomassie blue staining of purified MAN2B1 protein (Cat# TP300638). The protein was produced from HEK293T cells transfected with MAN2B1 cDNA clone (Cat# [RC200638]) using MegaTran 2.0 (Cat# [TT210002]).