

## Product datasheet for **TP300636L**

### ICAM4 (NM\_001039132) Human Recombinant Protein

#### Product data:

**Product Type:** Recombinant Proteins  
**Description:** Recombinant protein of human intercellular adhesion molecule 4 (Landsteiner-Wiener blood group) (ICAM4), transcript variant 3, 1 mg

**Species:** Human

**Expression Host:** HEK293T

**Expression cDNA Clone or AA Sequence:** >RC200636 protein sequence  
**Red**=Cloning site **Green**=Tags(s)

MGSLFPLSLLFFLAAAYPGVGSALGRRTKRAQSPKGSPLAPSGTSVPFWWRMSPEFVAVQPGKSVQLNCS  
NSCPQPQNSSLRTPLRQGKTLRGPWVSYQLLDVRAWSSLAHCLVTCAGKTRWATSRTAYSVPGGLLGG  
DPEAWKPGHLFRKPGALHRPGSGQRDLDRVCCWTPRLLAARDLPRAPQSRPPGGPQQLGTHYTDARLEP  
RAHSFGLRFHRCPCRDPPHCGRCVPMQVPSYEVPGVKGDVLCRLSEKKNMKQSGEMAIHGG

**TRTRPLEQKLISEEDLAANDILDYKDDDDKV**

**Tag:** C-Myc/DDK

**Predicted MW:** 27.4 kDa

**Concentration:** >0.05 µg/µL as determined by microplate BCA method

**Purity:** > 80% as determined by SDS-PAGE and Coomassie blue staining

**Buffer:** 25 mM Tris-HCl, 100 mM glycine, pH 7.3, 10% glycerol

**Preparation:** Recombinant protein was captured through anti-DDK affinity column followed by conventional chromatography steps.

**Note:** For testing in cell culture applications, please filter before use. Note that you may experience some loss of protein during the filtration process.

**Storage:** Store at -80°C.

**Stability:** Stable for 12 months from the date of receipt of the product under proper storage and handling conditions. Avoid repeated freeze-thaw cycles.

**RefSeq:** [NP\\_001034221](#)

**Locus ID:** 3386



[View online »](#)

UniProt ID: [Q14773](#), [U5U6P8](#)

RefSeq Size: 1277

Cytogenetics: 19p13.2

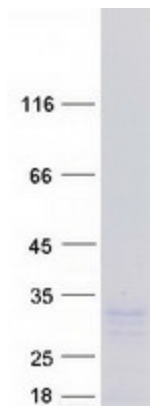
RefSeq ORF: 816

Synonyms: CD242; LW

**Summary:** This gene encodes the Landsteiner-Wiener (LW) blood group antigen(s) that belongs to the immunoglobulin (Ig) superfamily, and that shares similarity with the intercellular adhesion molecule (ICAM) protein family. This ICAM protein contains 2 Ig-like C2-type domains and binds to the leukocyte adhesion LFA-1 protein. The molecular basis of the LW(A)/LW(B) blood group antigens is a single aa variation at position 100; Gln-100=LW(A) and Arg-100=LW(B). Alternative splicing results in multiple transcript variants encoding distinct isoforms. [provided by RefSeq, Jul 2008]

**Protein Families:** Secreted Protein, Transmembrane

### Product images:



Coomassie blue staining of purified ICAM4 protein (Cat# [TP300636]). The protein was produced from HEK293T cells transfected with ICAM4 cDNA clone (Cat# [RC200636]) using MegaTran 2.0 (Cat# [TT210002]).