

## Product datasheet for TP300631

### ESE1 (ELF3) (NM\_004433) Human Recombinant Protein

#### Product data:

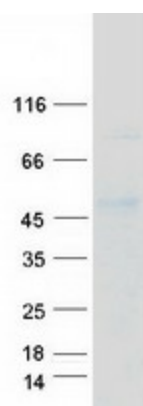
<b>Product Type:</b>	Recombinant Proteins
<b>Description:</b>	Recombinant protein of human E74-like factor 3 (ets domain transcription factor, epithelial-specific ) (ELF3), transcript variant 1, 20 µg
<b>Species:</b>	Human
<b>Expression Host:</b>	HEK293T
<b>Expression cDNA Clone or AA Sequence:</b>	>RC200631 protein sequence Red=Cloning site Green=Tags(s)
	<p>MAATCEISNIFSNYFSAMYSSDSTLASVPPAATFGADDLVLTLNPNQMSLEGTEKASWLGEQPQFWSKT QVLDWISYQVEKNKYDASAIIDFSRCDMDGATLNCNCALEELRLVFGPLGDQLHAQLRDLTSSSSDELWII ELLEKDGMAFQEALDPGPFQDQSPFAQELLDDGQQASPYHPGSCGAGAPSPGSSDVSTAGTGASRSSHSS DSGGSDVDLDPTDGLFSPDGFDRDCKKGDPKHGKRRGRPRKLSKEYWDCLEGKSKHAPRGTHLWEFIR DILIHPELNEGLMKWENRHEGVFKFLRSEAVAQLWGQKKKNSNMTEKLSRAMRYYYKREILERVDGRRL VYKFGKNSSGWKEEVLQSRN</p> <p>TRTRPLEQKLISEEDLAANDILDYKDDDDKV</p>
<b>Tag:</b>	C-Myc/DDK
<b>Predicted MW:</b>	41.3 kDa
<b>Concentration:</b>	>0.05 µg/µL as determined by microplate BCA method
<b>Purity:</b>	> 80% as determined by SDS-PAGE and Coomassie blue staining
<b>Buffer:</b>	25 mM Tris-HCl, 100 mM glycine, pH 7.3, 10% glycerol
<b>Preparation:</b>	Recombinant protein was captured through anti-DDK affinity column followed by conventional chromatography steps.
<b>Note:</b>	For testing in cell culture applications, please filter before use. Note that you may experience some loss of protein during the filtration process.
<b>Storage:</b>	Store at -80°C.
<b>Stability:</b>	Stable for 12 months from the date of receipt of the product under proper storage and handling conditions. Avoid repeated freeze-thaw cycles.
<b>RefSeq:</b>	<u><a href="#">NP_004424</a></u>



[View online »](#)

Locus ID:	1999
UniProt ID:	<a href="#">P78545</a> , <a href="#">A0A024R974</a>
RefSeq Size:	3149
Cytogenetics:	1q32.1
RefSeq ORF:	1113
Synonyms:	EPR-1; ERT; ESE-1; ESX
Summary:	Transcriptional activator that binds and transactivates ETS sequences containing the consensus nucleotide core sequence GGA[AT]. Acts synergistically with POU2F3 to transactivate the SPRR2A promoter and with RUNX1 to transactivate the ANGPT1 promoter. Also transactivates collagenase, CCL20, CLND7, FLG, KRT8, NOS2, PTGS2, SPRR2B, TGFBR2 and TGM3 promoters. Represses KRT4 promoter activity. Involved in mediating vascular inflammation. May play an important role in epithelial cell differentiation and tumorigenesis. May be a critical downstream effector of the ERBB2 signaling pathway. May be associated with mammary gland development and involution. Plays an important role in the regulation of transcription with TATA-less promoters in preimplantation embryos, which is essential in preimplantation development (By similarity).[UniProtKB/Swiss-Prot Function]
Protein Families:	Transcription Factors

### Product images:



Coomassie blue staining of purified ELF3 protein (Cat# TP300631). The protein was produced from HEK293T cells transfected with ELF3 cDNA clone (Cat# [RC200631]) using MegaTran 2.0 (Cat# [TT210002]).