

Product datasheet for TP300625

BCAT2 (NM_001190) Human Recombinant Protein

Product data:

Product Type:	Recombinant Proteins
Description:	Recombinant protein of human branched chain aminotransferase 2, mitochondrial (BCAT2), nuclear gene encoding mitochondrial protein, 20 µg
Species:	Human
Expression Host:	HEK293T
Expression cDNA Clone or AA Sequence:	>RC200625 protein sequence Red =Cloning site Green =Tags(s)

MAAAALGQIWARKLLSVPWLLCGPRRYASSFKAADLQLEMTQKPHKKPGPGPEPLVFGKTFDTHMLMVE
W
NDKGWGQPRIQPFQNLTLHPASSSLHYSLQLFEGMKAFKQKQVRLFRPWLNMDRMLRSAMRLCLP
SFD
KLELLECIRRLIEVDKDWVDAAGTSLYVRPVLIGNEPSLGVSQPTRALLFVILCPVGAYFPGGSVTPVS
LLADPAFIRAWVGGVGNKLGNYGPTVLVQQEALKRGCEQVLWLYGPDHQLTEVGTMNIFVYWTHED
GV
LELVTPPLNGVILPGVVRQSLDMAQTWGEFRVVERTITMKQLLRAL E EGRVREVFSGGTACQVCPVHRI
LYKDRNLHIPTMENGPELILRFQKELKEIQYGIRAH E W M F P V

TRTRPLEQKLISEEDLAANDILDYKDDDDKV

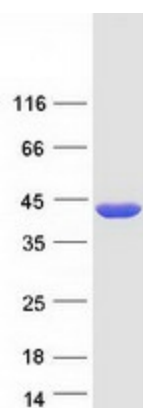
Tag:	C-Myc/DDK
Predicted MW:	41.2 kDa
Concentration:	>0.05 µg/µL as determined by microplate BCA method
Purity:	> 80% as determined by SDS-PAGE and Coomassie blue staining
Buffer:	25 mM Tris-HCl, 100 mM glycine, pH 7.3, 10% glycerol
Preparation:	Recombinant protein was captured through anti-DDK affinity column followed by conventional chromatography steps.
Note:	For testing in cell culture applications, please filter before use. Note that you may experience some loss of protein during the filtration process.
Storage:	Store at -80°C.



[View online »](#)

Stability:	Stable for 12 months from the date of receipt of the product under proper storage and handling conditions. Avoid repeated freeze-thaw cycles.
RefSeq:	<u>NP_001181</u>
Locus ID:	587
UniProt ID:	<u>O15382</u>
RefSeq Size:	1616
Cytogenetics:	19q13.33
RefSeq ORF:	1176
Synonyms:	BCAM; BCATM; BCT2; HVLI; PP18
Summary:	This gene encodes a branched chain aminotransferase found in mitochondria. The encoded protein forms a dimer that catalyzes the first step in the production of the branched chain amino acids leucine, isoleucine, and valine. Multiple transcript variants encoding different isoforms have been found for this gene. [provided by RefSeq, Sep 2009]
Protein Families:	Druggable Genome
Protein Pathways:	Metabolic pathways, Pantothenate and CoA biosynthesis, Valine, leucine and isoleucine biosynthesis, Valine, leucine and isoleucine degradation

Product images:



Coomassie blue staining of purified BCAT2 protein (Cat# TP300625). The protein was produced from HEK293T cells transfected with BCAT2 cDNA clone (Cat# [RC200625]) using MegaTran 2.0 (Cat# [TT210002]).