

Product datasheet for **TP300619M**

Spermine synthase (SMS) (NM_004595) Human Recombinant Protein

Product data:

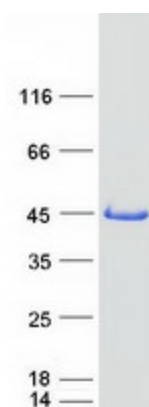
Product Type:	Recombinant Proteins
Description:	Recombinant protein of human spermine synthase (SMS), 100 µg
Species:	Human
Expression Host:	HEK293T
Expression cDNA Clone or AA Sequence:	>RC200619 protein sequence Red =Cloning site Green =Tags(s)
	 MAAARHSTLDFMLGAKADGETILKGLQSFQEQGMAESVHTWQDHGYLATYTNKNGSFANLRIYPHGLV L LDLQSYDGDAQGKEEIDSILNKVEERMKELSQDSTGRVKRLPPIVIRGGAIDRYWPTADGRLVEYDIDEV YDEDSYQNIKILHSKQFGNILILSGDVNLAESDLAYTRAIMGSGKEDYTGKDVLLGGGDDGGILCEIVK LKPKMVTMVEIDQMVIDGCKKYMRKTCGDVLDNLKGDYQVLIEDCIPVLKRYAKEGREFDYVINDLTAV PISTSPPEEDSTWEFLRLILDLSMKVLKQDGKYFTQGNCVNLTEALSLYEEQLGRLYCPVEFSKEIVCVPS YLELWVFYTVWKKAKP TRTRPLEQKLISEEDLAANDILDYKDDDDKV
Tag:	C-Myc/DDK
Predicted MW:	41.1 kDa
Concentration:	>0.05 µg/µL as determined by microplate BCA method
Purity:	> 80% as determined by SDS-PAGE and Coomassie blue staining
Buffer:	25 mM Tris-HCl, 100 mM glycine, pH 7.3, 10% glycerol
Preparation:	Recombinant protein was captured through anti-DDK affinity column followed by conventional chromatography steps.
Note:	For testing in cell culture applications, please filter before use. Note that you may experience some loss of protein during the filtration process.
Storage:	Store at -80°C.
Stability:	Stable for 12 months from the date of receipt of the product under proper storage and handling conditions. Avoid repeated freeze-thaw cycles.
RefSeq:	<u>NP_004586</u>



[View online »](#)

Locus ID:	6611
UniProt ID:	P52788
RefSeq Size:	1868
Cytogenetics:	Xp22.11
RefSeq ORF:	1098
Synonyms:	MRSR; SPMSY; SpS; SRS
Summary:	This gene encodes a protein belonging to the spermidine/spermin synthase family and catalyzes the production of spermine from spermidine. Pseudogenes of this gene are located on chromosomes 1, 5, 6 and X. Mutations in this gene cause an X-linked intellectual disability called Snyder-Robinson Syndrome (SRS). Multiple transcript variants encoding different isoforms have been found for this gene. [provided by RefSeq, Jul 2017]
Protein Pathways:	Arginine and proline metabolism, beta-Alanine metabolism, Cysteine and methionine metabolism, Glutathione metabolism, Metabolic pathways

Product images:



Coomassie blue staining of purified SMS protein (Cat# [TP300619]). The protein was produced from HEK293T cells transfected with SMS cDNA clone (Cat# [RC200619]) using MegaTran 2.0 (Cat# [TT210002]).