

## Product datasheet for **TP300602M**

### TRAPPC3 (NM\_014408) Human Recombinant Protein

#### Product data:

Product Type:	Recombinant Proteins
Description:	Recombinant protein of human trafficking protein particle complex 3 (TRAPPC3), 100 µg
Species:	Human
Expression Host:	HEK293T
Expression cDNA Clone or AA Sequence:	>RC200602 protein sequence <b>Red</b> =Cloning site <b>Green</b> =Tags(s)  MSRQANRGTESKKMSSEFTLTYGALVTQLCKDYENDEDVNKQLDKMGFNIGVRLIEDFLARSNVGRCH D FRETADVIKVAFKMYLGITPSITNWSPAGDEFSLILENNPLVDFVELPDNHSSLIYSNLLCGVLRGALE MVQMAVEAKFVQDTLKG DGVT EIRMR FIRRIEDNLPAGEE  <b>TR</b> TRPLEQKLISEEDLAANDILDYKDDDDKV
Tag:	C-Myc/DDK
Predicted MW:	20.1 kDa
Concentration:	>0.05 µg/µL as determined by microplate BCA method
Purity:	> 80% as determined by SDS-PAGE and Coomassie blue staining
Buffer:	25 mM Tris-HCl, 100 mM glycine, pH 7.3, 10% glycerol
Preparation:	Recombinant protein was captured through anti-DDK affinity column followed by conventional chromatography steps.
Note:	For testing in cell culture applications, please filter before use. Note that you may experience some loss of protein during the filtration process.
Storage:	Store at -80°C.
Stability:	Stable for 12 months from the date of receipt of the product under proper storage and handling conditions. Avoid repeated freeze-thaw cycles.
RefSeq:	<u><a href="#">NP_055223</a></u>
Locus ID:	27095
UniProt ID:	<u><a href="#">O43617</a></u>



[View online »](#)

RefSeq Size: 1333

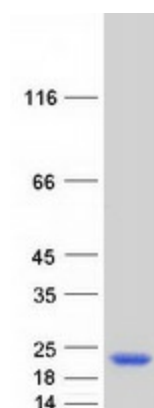
Cytogenetics: 1p34.3

RefSeq ORF: 540

Synonyms: BET3

**Summary:** This gene encodes a component of the trafficking protein particle complex, which tethers transport vesicles to the cis-Golgi membrane. The encoded protein participates in the regulation of transport from the endoplasmic reticulum to the Golgi apparatus. Alternative splicing results in multiple transcript variants. [provided by RefSeq, Aug 2012]

## Product images:



Coomassie blue staining of purified TRAPPC3 protein (Cat# [TP300602]). The protein was produced from HEK293T cells transfected with TRAPPC3 cDNA clone (Cat# [RC200602]) using MegaTran 2.0 (Cat# [TT210002]).