

## Product datasheet for **TP300589**

### Calumenin (CALU) (NM\_001219) Human Recombinant Protein

#### Product data:

Product Type:	Recombinant Proteins
Description:	Recombinant protein of human calumenin (CALU), transcript variant 1, 20 µg
Species:	Human
Expression Host:	HEK293T
Expression cDNA Clone or AA Sequence:	>RC200589 protein sequence <b>Red</b> =Cloning site <b>Green</b> =Tags(s)
	 MDLRQFLMCLSLCTAFALSKPTEKKDRVHHEPQLSDKVHNDAAQSFYDHDHDAFLGAEAAKTFDQLTPEESK ERLGKIVSKIDGDKDGFVTVDLKDWDIKFAQKRWIYEDVERQWKGHDLNEDGLVSWEEYKNATYGYVLDL PDPDDGFNYKQMMVRDERRFKMADKDGDLIATKEEFTAFLHPEEYDYMKDIVVQETMEDIDKNADGFIDL EEYIGDMYSHDGNTDEPEWVKTEREQFVEFRDKNRDGKMDKEETKDWILPSDYDHAEAEARHLVYESDQN KDGLTKKEIVDKYDLFVGSQATDFGEALVRHDEF  <b>TRTRPLEQKLISEEDLAANDILDYKDDDDKV</b>
Tag:	C-Myc/DDK
Predicted MW:	34.9 kDa
Concentration:	>0.05 µg/µL as determined by microplate BCA method
Purity:	> 80% as determined by SDS-PAGE and Coomassie blue staining
Buffer:	25 mM Tris-HCl, 100 mM glycine, pH 7.3, 10% glycerol
Preparation:	Recombinant protein was captured through anti-DDK affinity column followed by conventional chromatography steps.
Note:	For testing in cell culture applications, please filter before use. Note that you may experience some loss of protein during the filtration process.
Storage:	Store at -80°C.
Stability:	Stable for 12 months from the date of receipt of the product under proper storage and handling conditions. Avoid repeated freeze-thaw cycles.
RefSeq:	<u><a href="#">NP_001210</a></u>
Locus ID:	813



[View online »](#)

UniProt ID: [O43852](#), [Q6IAW5](#), [B3KQF5](#), [D6QS48](#)

RefSeq Size: 5366

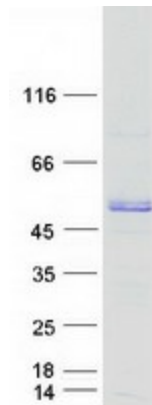
Cytogenetics: 7q32.1

RefSeq ORF: 945

**Summary:** The product of this gene is a calcium-binding protein localized in the endoplasmic reticulum (ER) and it is involved in such ER functions as protein folding and sorting. This protein belongs to a family of multiple EF-hand proteins (CERC) that include reticulocalbin, ERC-55, and Cab45 and the product of this gene. Alternatively spliced transcript variants encoding different isoforms have been identified. [provided by RefSeq, Oct 2008]

**Protein Families:** Secreted Protein

### Product images:



Coomassie blue staining of purified CALU protein (Cat# TP300589). The protein was produced from HEK293T cells transfected with CALU cDNA clone (Cat# [RC200589]) using MegaTran 2.0 (Cat# [TT210002]).