

## Product datasheet for **TP300586L**

### **FSTL1 (NM\_007085) Human Recombinant Protein**

#### **Product data:**

**Product Type:** Recombinant Proteins  
**Description:** Recombinant protein of human follistatin-like 1 (FSTL1), 1 mg  
**Species:** Human  
**Expression Host:** HEK293T  
**Expression cDNA Clone or AA Sequence:** >RC200586 protein sequence  
**Red**=Cloning site **Green**=Tags(s)

MWKRWLALALVAVAVWRAEEELRSKSKICANVFCGAGRECAVTEKGEPTCLCIEQCKPHKRPVCGSNG  
KTYLNHCELHRDACTGSKIQVDYDGHCKEKKSVSPSPVWCYQSNRDELRRRIIQWLEAIIPDGWFS  
KGSNYSEILDKYFKNFDNGDSRLDSSEFLKFVEQNETAINITTPDQENNKLLRGLCVDALIELSDENAD  
WKLSFQEFKCLNPSFNPPEKKCALEDETYADGAETEVDNCNRCVCACGNWVCTAMTCDGKNQKGAQTQTE  
EEMTRYVQELQKHQETAEKTKRVSTKEI

**TRTRPLEQKLISEEDLAANDILDYKDDDDKV**

**Tag:** C-Myc/DDK  
**Predicted MW:** 32.6 kDa  
**Concentration:** >0.05 µg/µL as determined by microplate BCA method  
**Purity:** > 80% as determined by SDS-PAGE and Coomassie blue staining  
**Buffer:** 25 mM Tris-HCl, 100 mM glycine, pH 7.3, 10% glycerol  
**Preparation:** Recombinant protein was captured through anti-DDK affinity column followed by conventional chromatography steps.  
**Note:** For testing in cell culture applications, please filter before use. Note that you may experience some loss of protein during the filtration process.  
**Storage:** Store at -80°C.  
**Stability:** Stable for 12 months from the date of receipt of the product under proper storage and handling conditions. Avoid repeated freeze-thaw cycles.  
**RefSeq:** [NP\\_009016](#)  
**Locus ID:** 11167



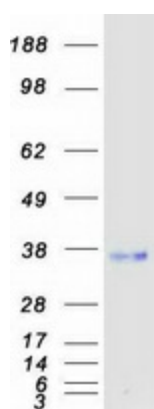
[View online »](#)

UniProt ID: [Q12841](#)  
RefSeq Size: 3840  
Cytogenetics: 3q13.33  
RefSeq ORF: 924  
Synonyms: FRP; FSL1; MIR198; OCC-1; OCC1; tsc36

**Summary:** This gene encodes a protein with similarity to follistatin, an activin-binding protein. It contains an FS module, a follistatin-like sequence containing 10 conserved cysteine residues. This gene product is thought to be an autoantigen associated with rheumatoid arthritis. [provided by RefSeq, Jul 2008]

**Protein Families:** Secreted Protein

### Product images:



Coomassie blue staining of purified FSTL1 protein (Cat# [TP300586]). The protein was produced from HEK293T cells transfected with FSTL1 cDNA clone (Cat# [RC200586]) using MegaTran 2.0 (Cat# [TT210002]).