

Product datasheet for **TP300583**

ID3 (NM_002167) Human Recombinant Protein

Product data:

Product Type:	Recombinant Proteins
Description:	Recombinant protein of human inhibitor of DNA binding 3, dominant negative helix-loop-helix protein (ID3), 20 µg
Species:	Human
Expression Host:	HEK293T
Expression cDNA Clone or AA Sequence:	>RC200583 protein sequence Red =Cloning site Green =Tags(s)
	MKALSPVRGCYEAVCCLSERSLAIARGRGKGPAAEPLSLDDMNHCSRLRELVPGVPRGTQLSQVEIL QRVIDYILDQLQVLAEPAPGPPDGPHLPIQTAELAPELVISNDKRSFCH
	TRTRPLEQKLISEEDLAANDILDYKDDDDKV
Tag:	C-Myc/DDK
Predicted MW:	12.8 kDa
Concentration:	>0.05 µg/µL as determined by microplate BCA method
Purity:	> 80% as determined by SDS-PAGE and Coomassie blue staining
Buffer:	25 mM Tris-HCl, 100 mM glycine, pH 7.3, 10% glycerol
Preparation:	Recombinant protein was captured through anti-DDK affinity column followed by conventional chromatography steps.
Note:	For testing in cell culture applications, please filter before use. Note that you may experience some loss of protein during the filtration process.
Storage:	Store at -80°C.
Stability:	Stable for 12 months from the date of receipt of the product under proper storage and handling conditions. Avoid repeated freeze-thaw cycles.
RefSeq:	<u>NP_002158</u>
Locus ID:	3399
UniProt ID:	<u>Q02535</u>
RefSeq Size:	1252



[View online »](#)

Cytogenetics: 1p36.12

RefSeq ORF: 357

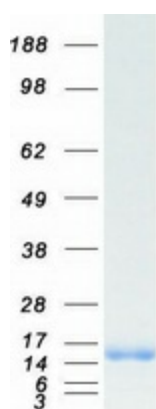
Synonyms: bHLHb25; HEIR-1

Summary: The protein encoded by this gene is a helix-loop-helix (HLH) protein that can form heterodimers with other HLH proteins. However, the encoded protein lacks a basic DNA-binding domain and therefore inhibits the DNA binding of any HLH protein with which it interacts. [provided by RefSeq, Aug 2011]

Protein Families: Druggable Genome, ES Cell Differentiation/IPS, Transcription Factors

Protein Pathways: TGF-beta signaling pathway

Product images:



Coomassie blue staining of purified ID3 protein (Cat# TP300583). The protein was produced from HEK293T cells transfected with ID3 cDNA clone (Cat# [RC200583]) using MegaTran 2.0 (Cat# [TT210002]).