

## Product datasheet for **TP300582**

### RPP20 (POP7) (NM\_005837) Human Recombinant Protein

#### Product data:

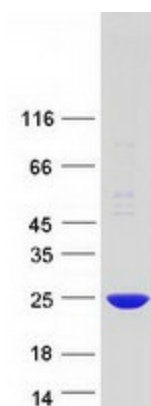
Product Type:	Recombinant Proteins
Description:	Recombinant protein of human processing of precursor 7, ribonuclease P/MRP subunit ( <i>S. cerevisiae</i> ) (POP7), 20 µg
Species:	Human
Expression Host:	HEK293T
Expression cDNA Clone or AA Sequence:	>RC200582 protein sequence <b>Red</b> =Cloning site <b>Green</b> =Tags(s)
	MAENREPRGAVEAEALDPVEYTLRKRLPSRLPRRPNDIYVNMKTDFKAQLARCQKLLDGGARGQNACSEIY IHGLGLAINRAINIALQLQAGSFGSLQVAANTSTVELVDELEPETDTREPLTRIRNNSAIHIRVFRVTPK
	<b>SGPTRTRPLEQKLISEEDLAANDILDYKDDDDKV</b>
Tag:	C-Myc/DDK
Predicted MW:	15.5 kDa
Concentration:	>0.05 µg/µL as determined by microplate BCA method
Purity:	> 80% as determined by SDS-PAGE and Coomassie blue staining
Buffer:	25 mM Tris-HCl, 100 mM glycine, pH 7.3, 10% glycerol
Preparation:	Recombinant protein was captured through anti-DDK affinity column followed by conventional chromatography steps.
Note:	For testing in cell culture applications, please filter before use. Note that you may experience some loss of protein during the filtration process.
Storage:	Store at -80°C.
Stability:	Stable for 12 months from the date of receipt of the product under proper storage and handling conditions. Avoid repeated freeze-thaw cycles.
RefSeq:	<a href="#">NP_005828</a>
Locus ID:	10248
UniProt ID:	<a href="#">O75817</a>
RefSeq Size:	949



[View online »](#)

Cytogenetics:	7q22.1
RefSeq ORF:	420
Synonyms:	0610037N12Rik; RPP2; RPP20
Summary:	Component of ribonuclease P, a ribonucleoprotein complex that generates mature tRNA molecules by cleaving their 5'-ends (PubMed:9630247, PubMed:30454648). Also a component of the MRP ribonuclease complex, which cleaves pre-rRNA sequences (PubMed:28115465). [UniProtKB/Swiss-Prot Function]
Protein Families:	Stem cell - Pluripotency

### Product images:



Coomassie blue staining of purified POP7 protein (Cat# TP300582). The protein was produced from HEK293T cells transfected with POP7 cDNA clone (Cat# [RC200582]) using MegaTran 2.0 (Cat# [TT210002]).