

Product datasheet for **TP300573M**

PAN2 (NM_014871) Human Recombinant Protein

Product data:

Product Type:	Recombinant Proteins
Description:	Recombinant protein of human PAN2 poly(A) specific ribonuclease subunit homolog (<i>S. cerevisiae</i>) (PAN2), transcript variant 1, 100 µg
Species:	Human
Expression Host:	HEK293T
Expression cDNA Clone or AA Sequence:	>RC200573 protein sequence Red =Cloning site Green =Tags(s)

MNFEGLDPGLAEYAPAMHSALDPVLD AHLNPNLLQNVELDPEGVALEALPVQESVHIMEGVVSELHSVVA
 EVGVPVSVSHFDLHEEMLWVGSHGGHATSFPGPALERYSSFQVNGSDDIRIQISLENGILFLTKNNLKYM
 ARGGLIIFDYLLDENEDMHSLLLTDSSTLLVGGLQNHILEIDLNTVQETQKYAVETPGVTIMRQTNRFFF
 CGHTSGKVSLRDLRTFKVEHEFD AFSGSLSDFDVHGNLLAACGFSSRLTGLACDRFLKVYDLRMMRAITP
 LQVHVDPAFLRFIPTYTSRLAIIISQSGQCQFCEPTGLANPADIFHVNPVGPLLMTFDVSASKQALAFGDS
 EGCVHLWTDSPESFNPYSRETEFALPCLVDSLPLDWSQDLLPLSLIPVPLTTDTLLSDWPAANSAPAP
 RRAPPVDAEILRTMKKVGFIGYAPNPRTRLRNQIPYRLKESDSEFDSFSQVTESPVGREEEPHLMVSKK
 YRKVTIKYSKLGLDFDFKHYNKTLFAGLEPHIPNAYCNCMIQVLYFLEPVRC LIQNHL CQKEFCLACEL
 GFLFHMLDL SRGDPCQGNNFLRAFRTIPEASALGLILADSDEASGKGNLARLIQRWNRFIL TQLHQDMQE
 LEIPQAYRGAGGSSFCSSGDSVIGQLFSCEMENCSLCRCGSETVRASSTLLFTLSYPDDKTGKNYDFAQV
 LKRSICLDQNTQAWCDTCEKYQPTIQTRNIRHLPDILVINCEVNSSKEADFWRMQAEVAFKMAVKKHGGE
 ISKNKEFALADWKELGSPEGVLVCP SIEELKNVWLPFSIRMKMTKNKGLDVCNWTGDDEM QWGPAREEE
 HGVVYDLMATVWHILDSRTGGSLVAHIKVGETYHQRKEGVTHQQWYLFNDFLIEPIDKHEAVQFDMNWK
 VPAILYYVKNRNLNSRYNLNIKNPIEASVLLAEASLARKQRKTHTTFIPLMLNEMPQIGDLVGLDAEFVTL
 NEEEAELRSDGKSTIKPSQMSVARITCVRGQGPNEGIPFIDYISTQEQQVDYLTQYSGIKPGDLDAKI
 SSKHLTTLKSTYLKLRFLIDIGVKFVGHGLQKDFRVINLMV PKDQVLDTVYLFHMPRKRMI SLRFLAWYF
 LDLKIQGETHDSIEDARTALQLYRKYLELSKNGTEPESFHKVLKGLYEKGRKMDWKVPEPEGQTSPKNA
 VFSSVLAL

TRTRPLEQKLISEEDLAANDILDYKDDDDKV

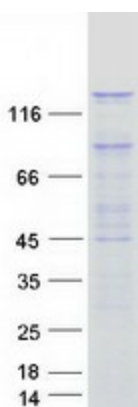
Tag:	C-Myc/DDK
Predicted MW:	134.8 kDa
Concentration:	>0.05 µg/µL as determined by microplate BCA method



[View online »](#)

Purity:	> 80% as determined by SDS-PAGE and Coomassie blue staining
Buffer:	25 mM Tris-HCl, 100 mM glycine, pH 7.3, 10% glycerol
Preparation:	Recombinant protein was captured through anti-DDK affinity column followed by conventional chromatography steps.
Note:	For testing in cell culture applications, please filter before use. Note that you may experience some loss of protein during the filtration process.
Storage:	Store at -80°C.
Stability:	Stable for 12 months from the date of receipt of the product under proper storage and handling conditions. Avoid repeated freeze-thaw cycles.
RefSeq:	NP_055686
Locus ID:	9924
UniProt ID:	Q504Q3
RefSeq Size:	5289
Cytogenetics:	12q13.3
RefSeq ORF:	3594
Synonyms:	USP52
Summary:	This gene encodes a deadenylase that functions as the catalytic subunit of the polyadenylate binding protein dependent poly(A) nuclease complex. The encoded protein is a magnesium dependent 3' to 5' exoribonuclease that is involved in the degradation of cytoplasmic mRNAs. Alternate splicing results in multiple transcript variants. [provided by RefSeq, Oct 2009]
Protein Families:	Protease

Product images:



Coomassie blue staining of purified PAN2 protein (Cat# [TP300573]). The protein was produced from HEK293T cells transfected with PAN2 cDNA clone (Cat# [RC200573]) using MegaTran 2.0 (Cat# [TT210002]).