

Product datasheet for **TP300566L**

STK16 (NM_003691) Human Recombinant Protein

Product data:

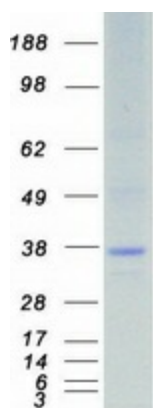
| | |
|---------------------------------------|--|
| Product Type: | Recombinant Proteins |
| Description: | Recombinant protein of human serine/threonine kinase 16 (STK16), transcript variant 1, 1 mg |
| Species: | Human |
| Expression Host: | HEK293T |
| Expression cDNA Clone or AA Sequence: | >RC200566 protein sequence Red =Cloning site Green =Tags(s) |
| | <p>MGHALCVCSRGTVIDNKRYLFIQKLGEGGFSYVDLVEGLHDGHFYALKRILCHEQQDREEAQREADMHR LFNHPNILRLVAYCLRERGAKEAWLLLPFFKRGTWNEIERLKDKGNFLTEDQILWLLLGICRGLEAIH AKGYAHRDLKPTNILLGDEGQPVLMDLGSMNQACIHVEGSRQALTLQDWAAQRCTISYRAPELFSVQSHC VIDERTDVWSLGCVLYAMMFGEGPYDMVFQKGDVALAVQNQLSIPQSPRHSSALWQLLNSMMTVDPHQ RPHIPLLLSQLEALQPPAPGQHTTQI</p> <p>TRTRPLEQKLISEEDLAANDILDYKDDDDKV</p> |
| Tag: | C-Myc/DDK |
| Predicted MW: | 35.1 |
| Concentration: | >0.05 µg/µL as determined by microplate BCA method |
| Purity: | > 80% as determined by SDS-PAGE and Coomassie blue staining |
| Buffer: | 25 mM Tris-HCl, 100 mM glycine, pH 7.3, 10% glycerol |
| Preparation: | Recombinant protein was captured through anti-DDK affinity column followed by conventional chromatography steps. |
| Note: | For testing in cell culture applications, please filter before use. Note that you may experience some loss of protein during the filtration process. |
| Storage: | Store at -80°C. |
| Stability: | Stable for 12 months from the date of receipt of the product under proper storage and handling conditions. Avoid repeated freeze-thaw cycles. |
| RefSeq: | NP_003682 |
| Locus ID: | 8576 |



[View online »](#)

| | |
|-------------------|--|
| UniProt ID: | O75716 |
| RefSeq Size: | 1682 |
| Cytogenetics: | 2q35 |
| RefSeq ORF: | 915 |
| Synonyms: | FLJ39635; KRCT; KRCT, MPSK, TSF1, PKL12, FLJ39635; MPSK; PKL12; protein kinase expressed in day 12 fetal liver; serine/threonine kinase 16; TSF1 |
| Summary: | Membrane-associated protein kinase that phosphorylates on serine and threonine residues. In vitro substrates include DRG1, ENO1 and EIF4EBP1. Also autophosphorylates. May be involved in secretory vesicle trafficking or intracellular signaling. May have a role in regulating stromal-epithelial interactions that occur during ductal morphogenesis in the mammary gland. May be involved in TGF-beta signaling. Able to autophosphorylate on Tyr residue; it is however unclear whether it has tyrosine-protein kinase toward other proteins.[UniProtKB/Swiss-Prot Function] |
| Protein Families: | Druggable Genome, Protein Kinase |

Product images:



Coomassie blue staining of purified STK16 protein (Cat# [TP300566]). The protein was produced from HEK293T cells transfected with STK16 cDNA clone (Cat# [RC200566]) using MegaTran 2.0 (Cat# [TT210002]).