

## Product datasheet for **TP300555L**

### **CRTAP (NM\_006371) Human Recombinant Protein**

#### Product data:

Product Type:	Recombinant Proteins
Description:	Recombinant protein of human cartilage associated protein (CRTAP), 1 mg
Species:	Human
Expression Host:	HEK293T
Expression cDNA Clone or AA Sequence:	>RC200555 protein sequence <b>Red</b> =Cloning site <b>Green</b> =Tags(s)
	MEPGRRGAAALLALLCVACALRAGRAQYERYSFRRSFRDELMPLESAYRHALDKYSGEHWAESVGYLEIS LRLHRLLRDSEAFCHRNCSPAAPQPEPAAGLASYPELRLFGGLLRRRAHCLKRCKQGLPAFRQSQPSRDVLA DFQRREPYKFLQFAYFKANNLPKAIAAAHTFLLKHPDDEMMKRNMAYYKSLPGAEDYIKDLETKSYESLF IRAVRAYNGENWRSTSITDMELALPDDFKAFYECLAACEGSREIKDFKDFYLSIADHYVEVLECKIQCEEN LTPVIGGYPVEKVFATMYHYLQFAYYKLNLDLNAAPCAVSYLLFDQNDKVMQQNLVYYQYHRDWTWGLSDE HFQRPPEAVQFFNVTTLQKELYDFAKENIMDDDEGEVVEYVDDLLELEETS
	<b>TRTRPLEQKLISEEDLAANDILDYKDDDDKV</b>
Tag:	C-Myc/DDK
Predicted MW:	43.9 kDa
Concentration:	>0.05 µg/µL as determined by microplate BCA method
Purity:	> 80% as determined by SDS-PAGE and Coomassie blue staining
Buffer:	25 mM Tris-HCl, 100 mM glycine, pH 7.3, 10% glycerol
Preparation:	Recombinant protein was captured through anti-DDK affinity column followed by conventional chromatography steps.
Note:	For testing in cell culture applications, please filter before use. Note that you may experience some loss of protein during the filtration process.
Storage:	Store at -80°C.
Stability:	Stable for 12 months from the date of receipt of the product under proper storage and handling conditions. Avoid repeated freeze-thaw cycles.
RefSeq:	<u><a href="#">NP_006362</a></u>
Locus ID:	10491



[View online »](#)

UniProt ID: [Q75718](#)

RefSeq Size: 6668

Cytogenetics: 3p22.3

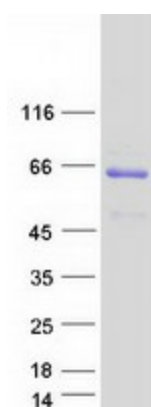
RefSeq ORF: 1203

Synonyms: CASP; LEPREL3; OI7; P3H5

**Summary:** The protein encoded by this gene is similar to the chicken and mouse CRTAP genes. The encoded protein is a scaffolding protein that may influence the activity of at least one member of the cytohesin/ARNO family in response to specific cellular stimuli. Defects in this gene are associated with osteogenesis imperfecta, a connective tissue disorder characterized by bone fragility and low bone mass. [provided by RefSeq, Jul 2008]

**Protein Families:** Secreted Protein, Transmembrane

### Product images:



Coomassie blue staining of purified CRTAP protein (Cat# [TP300555]). The protein was produced from HEK293T cells transfected with CRTAP cDNA clone (Cat# [RC200555]) using MegaTran 2.0 (Cat# [TT210002]).