

## Product datasheet for **TP300555**

### **CRTAP (NM\_006371) Human Recombinant Protein**

#### Product data:

**Product Type:** Recombinant Proteins

**Description:** Recombinant protein of human cartilage associated protein (CRTAP), 20 µg

**Species:** Human

**Expression Host:** HEK293T

**Expression cDNA Clone  
or AA Sequence:** >RC200555 protein sequence  
**Red**=Cloning site **Green**=Tags(s)

MEPGRRGAAALLALLCVACALRAGRAQYERYSFRRSFRDELMPLESAYRHALDKYSGEHWAESVGYLEIS  
LRLHRLLRDSEAFCHRNCSPAAPQPEPAAGLASYPELRLFGGLLRRRAHCLKRCKQGLPAFRQSQPSRDVLA  
DFQRREPYKFLQFAYFKANNLPKAIAAAHTFLLKHPDDEMMKRNMAYYKSLPGAEDYIKDLETKSYESLF  
IRAVRAYNGENWRSTSITDMELALPDDFKAFYECLAACEGSREIKDFKDFYLSIADHYVEVLECKIQCEEN  
LTPVIGGYPVEKFVATMYHYLQFAYYKLNLDKNAAPCAVSYLLFDQNDKVMQQNLVYYQYHRDWTWGLSDE  
HFQRPPEAVQFFNVTTLQKELYDFAKENIMDDDEGEVVEYVDDLLELEETS

**TRTRPLEQKLISEEDLAANDILDYKDDDDKV**

**Tag:** C-Myc/DDK

**Predicted MW:** 43.9 kDa

**Concentration:** >0.05 µg/µL as determined by microplate BCA method

**Purity:** > 80% as determined by SDS-PAGE and Coomassie blue staining

**Buffer:** 25 mM Tris-HCl, 100 mM glycine, pH 7.3, 10% glycerol

**Preparation:** Recombinant protein was captured through anti-DDK affinity column followed by conventional chromatography steps.

**Note:** For testing in cell culture applications, please filter before use. Note that you may experience some loss of protein during the filtration process.

**Storage:** Store at -80°C.

**Stability:** Stable for 12 months from the date of receipt of the product under proper storage and handling conditions. Avoid repeated freeze-thaw cycles.

**RefSeq:** [NP\\_006362](#)

**Locus ID:** 10491



[View online »](#)

UniProt ID: [Q75718](#)

RefSeq Size: 6668

Cytogenetics: 3p22.3

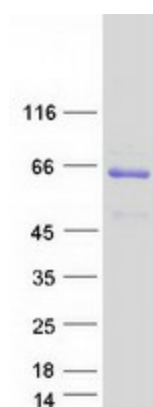
RefSeq ORF: 1203

Synonyms: CASP; LEPREL3; OI7; P3H5

**Summary:** The protein encoded by this gene is similar to the chicken and mouse CRTAP genes. The encoded protein is a scaffolding protein that may influence the activity of at least one member of the cytohesin/ARNO family in response to specific cellular stimuli. Defects in this gene are associated with osteogenesis imperfecta, a connective tissue disorder characterized by bone fragility and low bone mass. [provided by RefSeq, Jul 2008]

**Protein Families:** Secreted Protein, Transmembrane

### Product images:



Coomassie blue staining of purified CRTAP protein (Cat# TP300555). The protein was produced from HEK293T cells transfected with CRTAP cDNA clone (Cat# [RC200555]) using MegaTran 2.0 (Cat# [TT210002]).