

## Product datasheet for **TP300550**

### PSMG1 (NM\_003720) Human Recombinant Protein

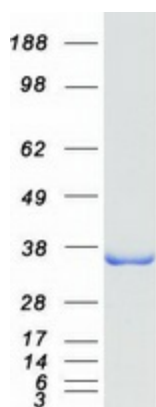
#### Product data:

Product Type:	Recombinant Proteins
Description:	Recombinant protein of human proteasome (prosome, macropain) assembly chaperone 1 (PSMG1), transcript variant 1, 20 µg
Species:	Human
Expression Host:	HEK293T
Expression cDNA Clone or AA Sequence:	>RC200550 protein sequence <b>Red</b> =Cloning site <b>Green</b> =Tags(s)  MAATFFGEVVKAPCRAGTEDEEEEEGRRETPEDREVRLQLARKREVRLLRRQTKTSLEVSLLKYPCKS FIIAIGNNAVAFLSSFVMNSGVWEEVGCAKLWNEWCRITDTHLSSTEAFVYHLKSNPSVFLCQCSCY VAEDQQYQWLEKVFVGSCKPRKNMQITILTCRHVTDYKTSESTGSLPSPFLRLKTNQNFKDSACCPILLEQPN IVHDLPAAVLSYQCQVWKIPAILYLCYTDVMKLDLITVEAFKPISTRSLKGLVKNIPQSTEILKKLMTTN EIQSNIYT  <b>TRTRPLEQKLISEEDLAANDILDYKDDDDKV</b>
Tag:	C-Myc/DDK
Predicted MW:	32.7 kDa
Concentration:	>0.05 µg/µL as determined by microplate BCA method
Purity:	> 80% as determined by SDS-PAGE and Coomassie blue staining
Buffer:	25 mM Tris-HCl, 100 mM glycine, pH 7.3, 10% glycerol
Preparation:	Recombinant protein was captured through anti-DDK affinity column followed by conventional chromatography steps.
Note:	For testing in cell culture applications, please filter before use. Note that you may experience some loss of protein during the filtration process.
Storage:	Store at -80°C.
Stability:	Stable for 12 months from the date of receipt of the product under proper storage and handling conditions. Avoid repeated freeze-thaw cycles.
RefSeq:	<u><a href="#">NP_003711</a></u>
Locus ID:	8624


[View online »](#)

UniProt ID:	<u>O95456</u>
RefSeq Size:	1140
Cytogenetics:	21q22.2
RefSeq ORF:	864
Synonyms:	C21LRP; DSCR2; LRPC21; PAC-1; PAC1
Summary:	Chaperone protein which promotes assembly of the 20S proteasome as part of a heterodimer with PSMG2. The PSMG1-PSMG2 heterodimer binds to the PSMA5 and PSMA7 proteasome subunits, promotes assembly of the proteasome alpha subunits into the heteroheptameric alpha ring and prevents alpha ring dimerization.[UniProtKB/Swiss-Prot Function]

### Product images:



Coomassie blue staining of purified PSMG1 protein (Cat# TP300550). The protein was produced from HEK293T cells transfected with PSMG1 cDNA clone (Cat# [RC200550]) using MegaTran 2.0 (Cat# [TT210002]).