

## Product datasheet for **TP300545M**

### RER1 (NM\_007033) Human Recombinant Protein

#### Product data:

Product Type:	Recombinant Proteins
Description:	Recombinant protein of human RER1 retention in endoplasmic reticulum 1 homolog (S. cerevisiae) (RER1), 100 µg
Species:	Human
Expression Host:	HEK293T
Expression cDNA Clone or AA Sequence:	>RC200545 protein sequence <b>Red</b> =Cloning site <b>Green</b> =Tags(s)
	MSEGDSVGESVHGKPSVYRFFTRLGQIQSWLDKSTPYTAVRWVTLGLSFVYMIRVYLLQGWYIVTYA LGIYHLNLFIAFLSPKVDPSLMEDSDDGPSLPTKQNEEFRPFIRRLPEFKFWHAATKGILVAMVCTFFDA FNVPVFWPILVMYFIMLFCITMKRQIKHMIKYRYIPFTHGKRRYRGKEDAGKAFAS
	<b>TRTRPLEQKLISEEDLAANDILDYKDDDDKV</b>
Tag:	C-Myc/DDK
Predicted MW:	22.8 kDa
Concentration:	>0.05 µg/µL as determined by microplate BCA method
Purity:	> 80% as determined by SDS-PAGE and Coomassie blue staining
Buffer:	25 mM Tris-HCl, 100 mM glycine, pH 7.3, 10% glycerol
Preparation:	Recombinant protein was captured through anti-DDK affinity column followed by conventional chromatography steps.
Note:	For testing in cell culture applications, please filter before use. Note that you may experience some loss of protein during the filtration process.
Storage:	Store at -80°C.
Stability:	Stable for 12 months from the date of receipt of the product under proper storage and handling conditions. Avoid repeated freeze-thaw cycles.
RefSeq:	<u>NP_008964</u>
Locus ID:	11079
UniProt ID:	<u>O15258</u>



[View online »](#)

RefSeq Size: 3118

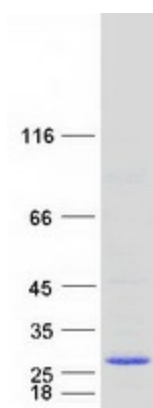
Cytogenetics: 1p36.32

RefSeq ORF: 462

**Summary:** The protein encoded by this gene is a multi-pass membrane protein that is localized to the golgi apparatus. It is involved in the retention of endoplasmic reticulum (ER) membrane proteins in the ER and retrieval of ER membrane proteins from the early Golgi compartment to facilitate gamma-secretase complex assembly. [provided by RefSeq, Oct 2009]

**Protein Families:** Transmembrane

### Product images:



Coomassie blue staining of purified RER1 protein (Cat# [TP300545]). The protein was produced from HEK293T cells transfected with RER1 cDNA clone (Cat# [RC200545]) using MegaTran 2.0 (Cat# [TT210002]).