

Product datasheet for TP300545

RER1 (NM_007033) Human Recombinant Protein

Product data:

| | |
|---------------------------------------|--|
| Product Type: | Recombinant Proteins |
| Description: | Recombinant protein of human RER1 retention in endoplasmic reticulum 1 homolog (S. cerevisiae) (RER1), 20 µg |
| Species: | Human |
| Expression Host: | HEK293T |
| Expression cDNA Clone or AA Sequence: | >RC200545 protein sequence Red =Cloning site Green =Tags(s) |
| | MSEGDSVGESVHGKPSVYRFFTRLGQIQSWLDKSTPYTAVRWVTLGLSFVYMIRVYLLQGWIYVITYA LGIYHLNLFIAFLSPKVDPSLMEDSDDGPSLPTKQNEEFRPFIRRLPEFKFWHAATKGILVAMVCTFFDA FNVPVFWPILVMYFIMLFCITMKRQIKHMIKYRYIPFTHGKRRYRGKEDAGKAFAS |
| | TRTRPLEQKLISEEDLAANDILDYKDDDDKV |
| Tag: | C-Myc/DDK |
| Predicted MW: | 22.8 kDa |
| Concentration: | >0.05 µg/µL as determined by microplate BCA method |
| Purity: | > 80% as determined by SDS-PAGE and Coomassie blue staining |
| Buffer: | 25 mM Tris-HCl, 100 mM glycine, pH 7.3, 10% glycerol |
| Preparation: | Recombinant protein was captured through anti-DDK affinity column followed by conventional chromatography steps. |
| Note: | For testing in cell culture applications, please filter before use. Note that you may experience some loss of protein during the filtration process. |
| Storage: | Store at -80°C. |
| Stability: | Stable for 12 months from the date of receipt of the product under proper storage and handling conditions. Avoid repeated freeze-thaw cycles. |
| RefSeq: | <u>NP_008964</u> |
| Locus ID: | 11079 |
| UniProt ID: | <u>O15258</u> , <u>Q5T094</u> |



[View online »](#)

RefSeq Size: 3118

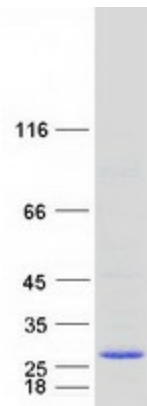
Cytogenetics: 1p36.32

RefSeq ORF: 462

Summary: The protein encoded by this gene is a multi-pass membrane protein that is localized to the golgi apparatus. It is involved in the retention of endoplasmic reticulum (ER) membrane proteins in the ER and retrieval of ER membrane proteins from the early Golgi compartment to facilitate gamma-secretase complex assembly. [provided by RefSeq, Oct 2009]

Protein Families: Transmembrane

Product images:



Coomassie blue staining of purified RER1 protein (Cat# TP300545). The protein was produced from HEK293T cells transfected with RER1 cDNA clone (Cat# [RC200545]) using MegaTran 2.0 (Cat# [TT210002]).