

Product datasheet for **TP300543M**

LDOC1 (NM_012317) Human Recombinant Protein

Product data:

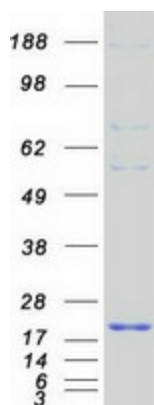
| | |
|---------------------------------------|--|
| Product Type: | Recombinant Proteins |
| Description: | Recombinant protein of human leucine zipper, down-regulated in cancer 1 (LDOC1), 100 µg |
| Species: | Human |
| Expression Host: | HEK293T |
| Expression cDNA Clone or AA Sequence: | >RC200543 protein sequence Red =Cloning site Green =Tags(s) |
| | MVDELVLLHALLMRHRALSIENSQLMEQLRLLVCERASLLRQVRPPSPVPPFETFNCESSRLPEFIVQ TASYMLVNENRFCNDAMKVAFLISLLTGEAEWVWPYIEMDSPILGDYRAFLDEMKGCFGWDDDEDDDDDE EEEDDY |
| | TRTRPLEQKLISEEDLAANDILDYKDDDDKV |
| Tag: | C-Myc/DDK |
| Predicted MW: | 16.8 kDa |
| Concentration: | >0.05 µg/µL as determined by microplate BCA method |
| Purity: | > 80% as determined by SDS-PAGE and Coomassie blue staining |
| Buffer: | 25 mM Tris-HCl, 100 mM glycine, pH 7.3, 10% glycerol |
| Preparation: | Recombinant protein was captured through anti-DDK affinity column followed by conventional chromatography steps. |
| Note: | For testing in cell culture applications, please filter before use. Note that you may experience some loss of protein during the filtration process. |
| Storage: | Store at -80°C. |
| Stability: | Stable for 12 months from the date of receipt of the product under proper storage and handling conditions. Avoid repeated freeze-thaw cycles. |
| RefSeq: | NP_036449 |
| Locus ID: | 23641 |
| UniProt ID: | O95751 |
| RefSeq Size: | 1470 |



[View online »](#)

| | |
|---------------|---|
| Cytogenetics: | Xq27.1 |
| RefSeq ORF: | 438 |
| Synonyms: | BCUR1; Mar7; Mart7; RTL7; SIRH7 |
| Summary: | The protein encoded by this gene contains a leucine zipper-like motif and a proline-rich region that shares marked similarity with an SH3-binding domain. The protein localizes to the nucleus and is down-regulated in some cancer cell lines. It is thought to regulate the transcriptional response mediated by the nuclear factor kappa B (NF-kappaB). The gene has been proposed as a tumor suppressor gene whose protein product may have an important role in the development and/or progression of some cancers. [provided by RefSeq, Jul 2008] |

Product images:



Coomassie blue staining of purified LDOC1 protein (Cat# [TP300543]). The protein was produced from HEK293T cells transfected with LDOC1 cDNA clone (Cat# [RC200543]) using MegaTran 2.0 (Cat# [TT210002]).