

## Product datasheet for **TP300543L**

### LDOC1 (NM\_012317) Human Recombinant Protein

#### Product data:

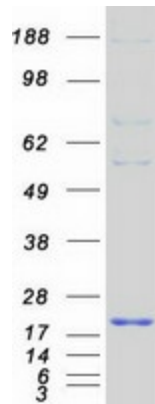
Product Type:	Recombinant Proteins
Description:	Recombinant protein of human leucine zipper, down-regulated in cancer 1 (LDOC1), 1 mg
Species:	Human
Expression Host:	HEK293T
Expression cDNA Clone or AA Sequence:	>RC200543 protein sequence <b>Red</b> =Cloning site <b>Green</b> =Tags(s)
	MVDELVLLHALLMRHRALSIENSQLMEQLRLLVCERASLLRQVRPPSCVPFPFETFNCESSRLPEFIVQ TASYMLVNNENRFCNDAMKVAFLISLLTGEAEWVWPYIEMDSPILGDYRAFLDEMKGCFGWDDDEDDDDDE EEEDDY
	<b>TRTRPLEQKLISEEDLAANDILDYKDDDDKV</b>
Tag:	C-Myc/DDK
Predicted MW:	16.8 kDa
Concentration:	>0.05 µg/µL as determined by microplate BCA method
Purity:	> 80% as determined by SDS-PAGE and Coomassie blue staining
Buffer:	25 mM Tris-HCl, 100 mM glycine, pH 7.3, 10% glycerol
Preparation:	Recombinant protein was captured through anti-DDK affinity column followed by conventional chromatography steps.
Note:	For testing in cell culture applications, please filter before use. Note that you may experience some loss of protein during the filtration process.
Storage:	Store at -80°C.
Stability:	Stable for 12 months from the date of receipt of the product under proper storage and handling conditions. Avoid repeated freeze-thaw cycles.
RefSeq:	<a href="#">NP_036449</a>
Locus ID:	23641
UniProt ID:	<a href="#">O95751</a>
RefSeq Size:	1470



[View online »](#)

Cytogenetics:	Xq27.1
RefSeq ORF:	438
Synonyms:	BCUR1; Mar7; Mart7; RTL7; SIRH7
Summary:	The protein encoded by this gene contains a leucine zipper-like motif and a proline-rich region that shares marked similarity with an SH3-binding domain. The protein localizes to the nucleus and is down-regulated in some cancer cell lines. It is thought to regulate the transcriptional response mediated by the nuclear factor kappa B (NF-kappaB). The gene has been proposed as a tumor suppressor gene whose protein product may have an important role in the development and/or progression of some cancers. [provided by RefSeq, Jul 2008]

### Product images:



Coomassie blue staining of purified LDOC1 protein (Cat# [TP300543]). The protein was produced from HEK293T cells transfected with LDOC1 cDNA clone (Cat# [RC200543]) using MegaTran 2.0 (Cat# [TT210002]).