

Product datasheet for TP300537

Stanniocalcin 2 (STC2) (NM_003714) Human Recombinant Protein

Product data:

Product Type: Recombinant Proteins
Description: Recombinant protein of human stanniocalcin 2 (STC2), 20 µg
Species: Human
Expression Host: HEK293T
Expression cDNA Clone or AA Sequence: >RC200537 protein sequence
Red=Cloning site **Green**=Tags(s)

MCAERLGQFMTLALVLATFDPARGTDATNPPEGPQDRSSQKGRSLQNTAEIQHCLVNAGDVGCGVFEC
FENNSCEIRGLHGICMTFLHNAGKFDAQGKSFIDALKCKAHALRHRFGCISRKCPAIREMVSQIQRECY
LKHDLCAAAQENTRVIVEMIHFKDLLLHEPYVDLVNLLLTCGEEVKEAITHSVQVQCEQNWGSLCSILSF
CTSAIQKPPTAPPERQPQVDRTKLSRAHHGEAGHHLPEPSSRETGRGAKGERGSKSHPNAHARGRVGGLG
AQGPGSGSSEWEDEQSEYSDIRR

TRTRPLE**QKLISEEDLAANDILDYKDDDDK**V

Tag: C-Myc/DDK
Predicted MW: 30.6 kDa
Concentration: >0.05 µg/µL as determined by microplate BCA method
Purity: > 80% as determined by SDS-PAGE and Coomassie blue staining
Buffer: 25 mM Tris-HCl, 100 mM glycine, pH 7.3, 10% glycerol
Preparation: Recombinant protein was captured through anti-DDK affinity column followed by conventional chromatography steps.
Note: For testing in cell culture applications, please filter before use. Note that you may experience some loss of protein during the filtration process.
Storage: Store at -80°C.
Stability: Stable for 12 months from the date of receipt of the product under proper storage and handling conditions. Avoid repeated freeze-thaw cycles.
RefSeq: [NP_003705](#)
Locus ID: 8614



[View online »](#)

UniProt ID: [O76061](#), [Q6FHC9](#)

RefSeq Size: 5361

Cytogenetics: 5q35.2

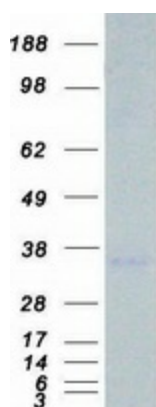
RefSeq ORF: 906

Synonyms: STC-2; STCRP

Summary: This gene encodes a secreted, homodimeric glycoprotein that is expressed in a wide variety of tissues and may have autocrine or paracrine functions. The encoded protein has 10 of its 15 cysteine residues conserved among stanniocalcin family members and is phosphorylated by casein kinase 2 exclusively on its serine residues. Its C-terminus contains a cluster of histidine residues which may interact with metal ions. The protein may play a role in the regulation of renal and intestinal calcium and phosphate transport, cell metabolism, or cellular calcium/phosphate homeostasis. Constitutive overexpression of human stanniocalcin 2 in mice resulted in pre- and postnatal growth restriction, reduced bone and skeletal muscle growth, and organomegaly. Expression of this gene is induced by estrogen and altered in some breast cancers. [provided by RefSeq, Jul 2008]

Protein Families: Druggable Genome, Secreted Protein

Product images:



Coomassie blue staining of purified STC2 protein (Cat# TP300537). The protein was produced from HEK293T cells transfected with STC2 cDNA clone (Cat# [RC200537]) using MegaTran 2.0 (Cat# [TT210002]).