

Product datasheet for **TP300533**

ESD (NM_001984) Human Recombinant Protein

Product data:

Product Type:	Recombinant Proteins
Description:	Recombinant protein of human esterase D/formylglutathione hydrolase (ESD), 20 µg
Species:	Human
Expression Host:	HEK293T
Expression cDNA Clone or AA Sequence:	>RC200533 protein sequence Red =Cloning site Green =Tags(s)
	MALKQISSNKCFGGLQKVFEHDSVELNCKMKFAVYLPPKAETGKCPALYWLSGLTCTEQNFISKSGYHQS ASEHGLVVIAPDTSPRGCNIKGEDESWDFGTGAGFYVDATEDPWKTNYRMYSYVTEELPQLINANFPVDP QRMSIFGHSMGGHGALICALKNPGKYKSVSAFAPICNPVLCPWGKKAFFSGYLGTDQSKWKAYDATHLVK S YPGSQLDILIDQGKDDQFLLDGQLLPDNFIAACTEKKIPVVFRLQEDYDHSYFIATFITDHIRHHAKYL NA TRTRPLEQKLISEEDLAANDILDYKDDDDKV
Tag:	C-Myc/DDK
Predicted MW:	31.3 kDa
Concentration:	>0.05 µg/µL as determined by microplate BCA method
Purity:	> 80% as determined by SDS-PAGE and Coomassie blue staining
Buffer:	25 mM Tris-HCl, 100 mM glycine, pH 7.3, 10% glycerol
Preparation:	Recombinant protein was captured through anti-DDK affinity column followed by conventional chromatography steps.
Note:	For testing in cell culture applications, please filter before use. Note that you may experience some loss of protein during the filtration process.
Storage:	Store at -80°C.
Stability:	Stable for 12 months from the date of receipt of the product under proper storage and handling conditions. Avoid repeated freeze-thaw cycles.
RefSeq:	<u>NP_001975</u>
Locus ID:	2098



[View online »](#)

UniProt ID: [P10768](#)

RefSeq Size: 1208

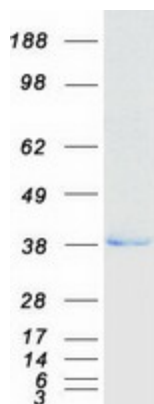
Cytogenetics: 13q14.2

RefSeq ORF: 846

Synonyms: FGH

Summary: This gene encodes a serine hydrolase that belongs to the esterase D family. The encoded enzyme is active toward numerous substrates including O-acetylated sialic acids, and it may be involved in the recycling of sialic acids. This gene is used as a genetic marker for retinoblastoma and Wilson's disease. [provided by RefSeq, Feb 2009]

Product images:



Coomassie blue staining of purified ESD protein (Cat# TP300533). The protein was produced from HEK293T cells transfected with ESD cDNA clone (Cat# [RC200533]) using MegaTran 2.0 (Cat# [TT210002]).