

Product datasheet for TP300527M

ANT 1 (PRPF6) (NM_012469) Human Recombinant Protein

Product data:

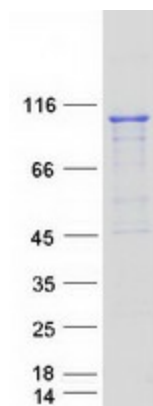
Product Type:	Recombinant Proteins
Description:	Recombinant protein of human PRPF6 pre-mRNA processing factor 6 homolog (<i>S. cerevisiae</i>) (PRPF6), 100 µg
Species:	Human
Expression Host:	HEK293T
Expression cDNA Clone or AA Sequence:	>RC200527 protein sequence Red =Cloning site Green =Tags(s)
	<p>MNKKKKPFLGMPAPLGYVPLGRLGRGATGFTTRSDIGPARDANDPVDDRHAPPGKRTVGDQMKNQAADDDD EDLNDTNYDEFNGYAGSLFSSGPYEKDDDEADAIYAALDKRMDERRKERREKREKIEKYRMERPKIQQ QFSDLKRKLAEVTEEWLSIPEVGDARNKRQRNPRYEKLTVPVDSFFAKHLQTGENHTSVDPRQTQFGGL NTPYPGGLNTPYPGGMTPGLMTPGTGELDMRKIGQARNTLMDMRLSQVSDSVSGQTWVDPKGYLTDLNSM IPTHGGDINDIKKARLLLKSVRETNPHHPPAWIASARLEEVTGKLQVARNLIMKGTEMCPKSEDVWLEAA RLQPGDTAKAVVAQAVRHLPQSVRIYIRAAELETDIRAKKRVLRKALEHVPNSVRLWKAAVELEEPEDAR IMLSRAVECCPTSVELWLALARLETYENARKVLNKARENIPTRHIWITAAKLEEANGNTQMVEKIIDRA ITSLRANGVEINREQWIQDAEECDRAGSVATCQAVMRAVIGIGIEEEDRKHTWMEDADSCVAHNALECAR AIYAYALQVFPSSKSVWLR AAYFEKNHGTRESLEALLQRAVAHCPKAEVLWLMGAKSKWLAGDVPAARSI LALAFQANPNSEIWLAAVKLESENDEYERARRLLAKARSSAPTARVFMKSVKLEWVQDNIRAAQDLCEE ALRHYEDFPKLWMMKGQIEEQKEMMEKAREAYNQGLKKCPHSTPLWLLLSRLEEKIGQLTRARAILEKSR LKNPKNPGLWLESVRLEYRAGLKNIANLMAKALQECPN SGILWSEAI FLEARPQRRTKSVDALKKCEHD PHVLLAVAKLFWSQRKITKAREWFHRTVKIDSDLGDAWAFYKFELQHGTEEQQEVRKRCESAEPRHGE LWCAVSKDIANWQKKIGDILRLVAGRIKNTF</p> <p>TRTRPLEQKLISEEDLAANDILDYKDDDDKV</p>
Tag:	C-Myc/DDK
Predicted MW:	106.7 kDa
Concentration:	>0.05 µg/µL as determined by microplate BCA method
Purity:	> 80% as determined by SDS-PAGE and Coomassie blue staining
Buffer:	25 mM Tris-HCl, 100 mM glycine, pH 7.3, 10% glycerol



[View online »](#)

Preparation:	Recombinant protein was captured through anti-DDK affinity column followed by conventional chromatography steps.
Note:	For testing in cell culture applications, please filter before use. Note that you may experience some loss of protein during the filtration process.
Storage:	Store at -80°C.
Stability:	Stable for 12 months from the date of receipt of the product under proper storage and handling conditions. Avoid repeated freeze-thaw cycles.
RefSeq:	NP_036601
Locus ID:	24148
UniProt ID:	O94906
RefSeq Size:	3120
Cytogenetics:	20q13.33
RefSeq ORF:	2823
Synonyms:	ANT-1; ANT1; C20orf14; hPrp6; Prp6; RP60; SNRNP102; TOM; U5-102K
Summary:	The protein encoded by this gene appears to be involved in pre-mRNA splicing, possibly acting as a bridging factor between U5 and U4/U6 snRNPs in formation of the spliceosome. The encoded protein also can bind androgen receptor, providing a link between transcriptional activation and splicing. [provided by RefSeq, Jul 2008]
Protein Families:	Druggable Genome
Protein Pathways:	Spliceosome

Product images:



Coomassie blue staining of purified PRPF6 protein (Cat# [TP300527]). The protein was produced from HEK293T cells transfected with PRPF6 cDNA clone (Cat# [RC200527]) using MegaTran 2.0 (Cat# [TT210002]).