

## Product datasheet for **TP300525M**

### **P70 S6 Kinase beta (RPS6KB2) (NM\_003952) Human Recombinant Protein**

#### Product data:

Product Type:	Recombinant Proteins
Description:	Recombinant protein of human ribosomal protein S6 kinase, 70kDa, polypeptide 2 (RPS6KB2), 100 µg
Species:	Human
Expression Host:	HEK293T
Expression cDNA Clone or AA Sequence:	>RC200525 protein sequence <b>Red</b> =Cloning site <b>Green</b> =Tags(s)

MAAVFDLDETEEGSEGEPELSPADACPLAELRAAGLEPVGHYEEVELTETSVNVGPERIGPHCFELL  
RVLGKGGYGKVFQVRKVQGTNLGKIYAMKVLKAKIVRNAKDTAHTRAERNILESVKHPFIVELAYAFQT  
GGKLYLILECLSGGELFTHLEREGIFLEDTACFYLAEITLALGHLHSQGIYRDLKPENIMLSSQGHIKL  
TDFGLCKESIHEGAVTHTFCGTIEYMAPEILVRSNGHRAVDWWSLALMYDMLTGSPPFTAENRKKTKMDK  
IIRGKLALPPYLTPDARDLVKKFLKRNPSQRIGGGPGDAADVQRHPFFRHMNWDDLAWRVDPPFRPCLQ  
SEEDVSQFDTRFTRQTPVDSRDDTALSESANQAFGLGFTYVAPSVLDSIKEGFSFQPKLRSPRRLNSSPRV  
PVSPKLFSPFEGFRPSPSLPEPTELPLPPLPPPPSTTAPLPIRPPSGTKKSKRGRGRPGR

**TRTRPLEQKLISEEDLAANDILDYKDDDDKV**

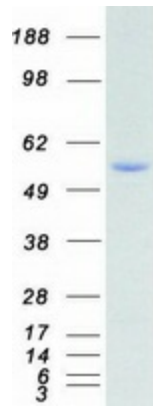
Tag:	C-Myc/DDK
Predicted MW:	53.3 kDa
Concentration:	>0.05 µg/µL as determined by microplate BCA method
Purity:	> 80% as determined by SDS-PAGE and Coomassie blue staining
Buffer:	25 mM Tris-HCl, 100 mM glycine, pH 7.3, 10% glycerol
Preparation:	Recombinant protein was captured through anti-DDK affinity column followed by conventional chromatography steps.
Note:	For testing in cell culture applications, please filter before use. Note that you may experience some loss of protein during the filtration process.
Storage:	Store at -80°C.
Stability:	Stable for 12 months from the date of receipt of the product under proper storage and handling conditions. Avoid repeated freeze-thaw cycles.



[View online >](#)

RefSeq:	<a href="#">NP_003943</a>
Locus ID:	6199
UniProt ID:	<a href="#">Q9UBS0</a>
RefSeq Size:	1782
Cytogenetics:	11q13.2
RefSeq ORF:	1446
Synonyms:	KLS; p70(S6K)-beta; P70-beta; P70-beta-1; P70-beta-2; p70S6Kb; S6K-beta2; S6K2; S6KB; S6Kbeta; S6KI(2); SRK; STK14B
Summary:	This gene encodes a member of the RSK (ribosomal S6 kinase) family of serine/threonine kinases. This kinase contains a kinase catalytic domain and phosphorylates the S6 ribosomal protein and eukaryotic translation initiation factor 4B (eIF4B). Phosphorylation of S6 leads to an increase in protein synthesis and cell proliferation. [provided by RefSeq, Jan 2015]
Protein Families:	Druggable Genome, Protein Kinase
Protein Pathways:	Acute myeloid leukemia, ErbB signaling pathway, Fc gamma R-mediated phagocytosis, Insulin signaling pathway, mTOR signaling pathway, TGF-beta signaling pathway

### Product images:



Coomassie blue staining of purified RPS6KB2 protein (Cat# [TP300525]). The protein was produced from HEK293T cells transfected with RPS6KB2 cDNA clone (Cat# [RC200525]) using MegaTran 2.0 (Cat# [TT210002]).